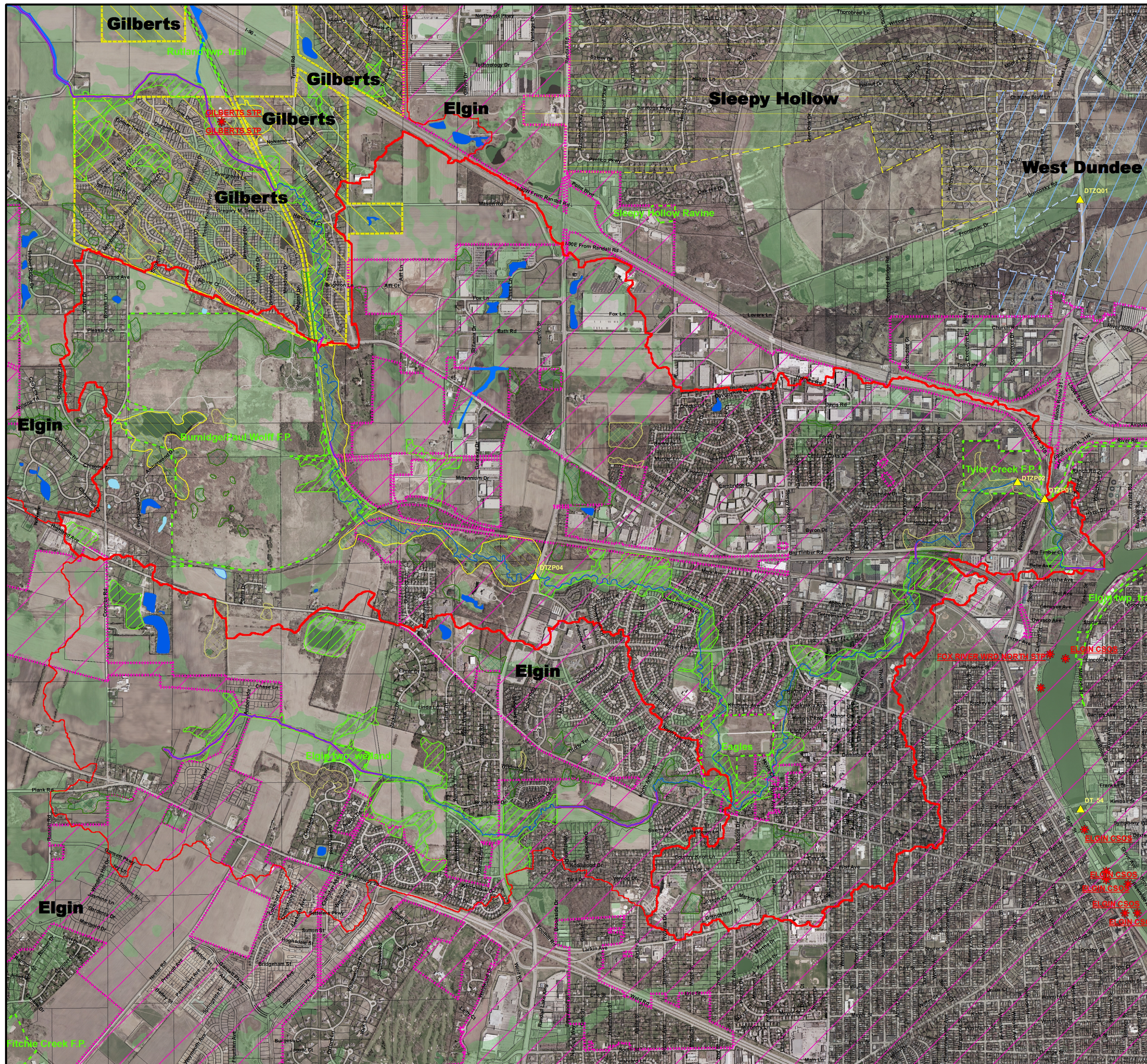


Lower Tyler Creek Subwatershed

Tyler Creek Watershed Plan



Legend

- ▲ IEPA WQ Sample Station
- * Point Source Discharge
- Tyler Creek
- Channelized
- Kane Co. F.P.
- ▭ Lower Tyler Subwatershed
- ▭ Tyler Watershed Boundary

Municipal Boundaries

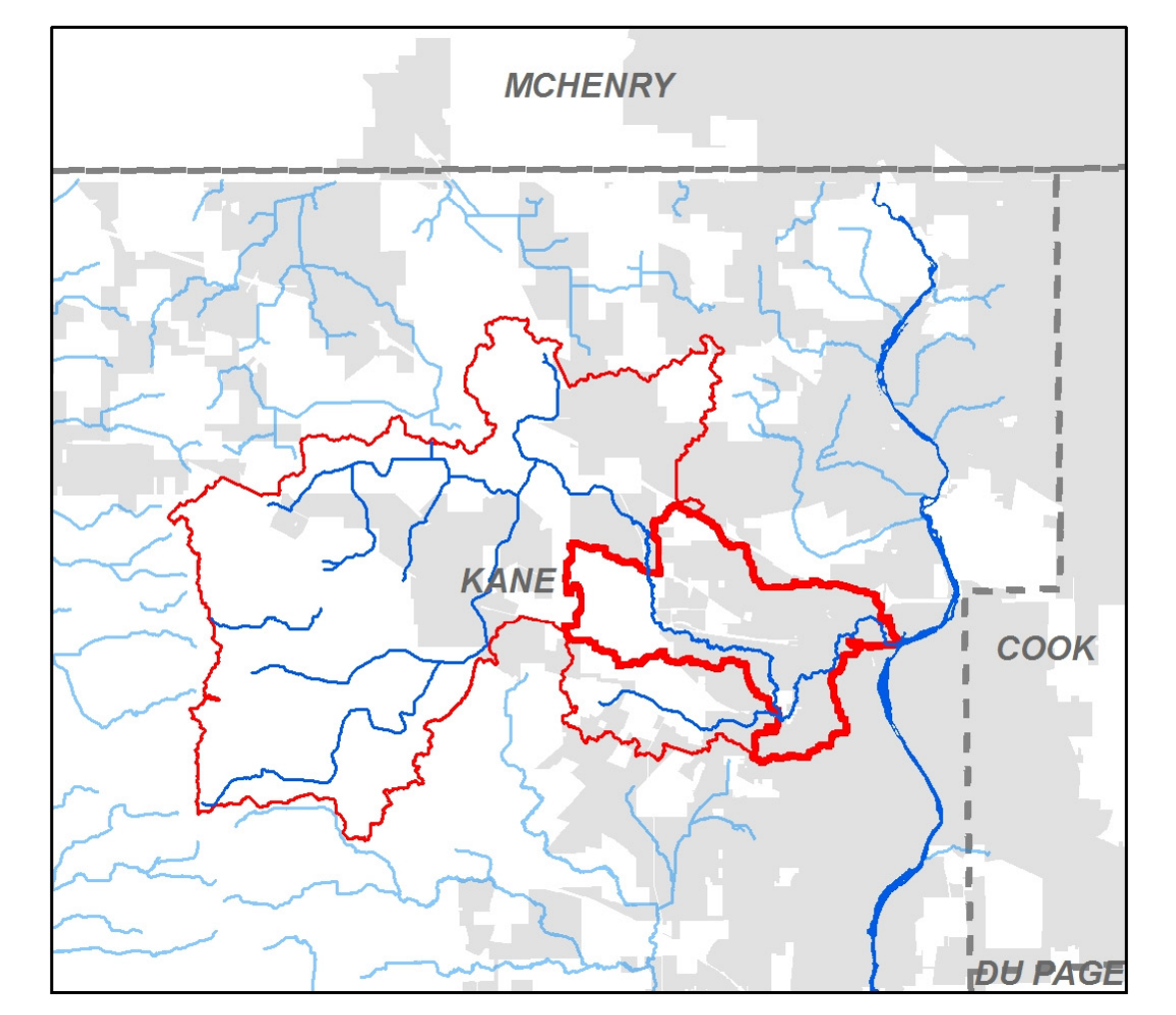
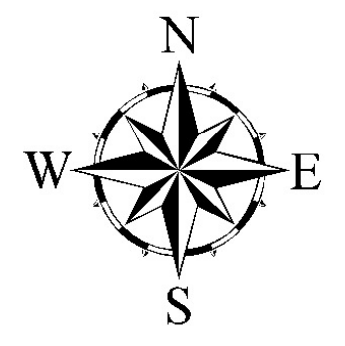
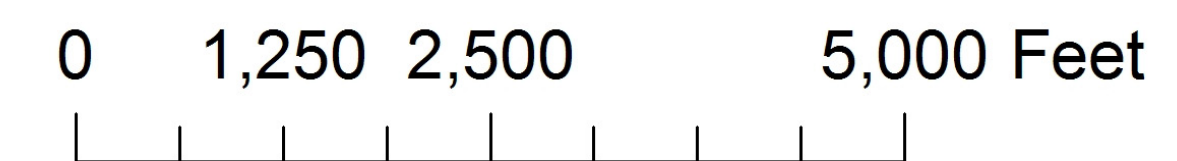
Name

- ▭ Algonquin
- ▭ Burlington
- ▭ Carpentersville
- ▭ Elgin
- ▭ Gilberts
- ▭ Hampshire
- ▭ Huntley
- ▭ Pingree Grove
- ▭ Sleepy Hollow
- ▭ South Elgin
- ▭ West Dundee
- ▭ Hyric Soils

Kane Co ADID Wetland Info

Classification

- ▨ High Functional Value
- ▨ High Habitat Quality
- ▨ Artificial Pond in Hyric Soils
- ▨ Artificial Pond in Non-Hyric Soils
- ▨ Farmed Wetland
- ▨ Linear Water Feature
- ▨ Natural Open Water
- ▨ Non-wetland
- ▨ Other Wetlands (low quality)



This map was prepared by WRC, Inc. for the Tyler Creek Watershed Committee and funded in part by the Illinois EPA Section 319 Grant Program. Sources of data for this map include IEPA, IDNR, NRCS, Kane County GIS Technologies, Kane County Dept of Environmental Management, Village of Gilberts, Village of Pingree Grove, and the City of Elgin. Prepared October 2006. Date of Aerial Photography: Spring 2005