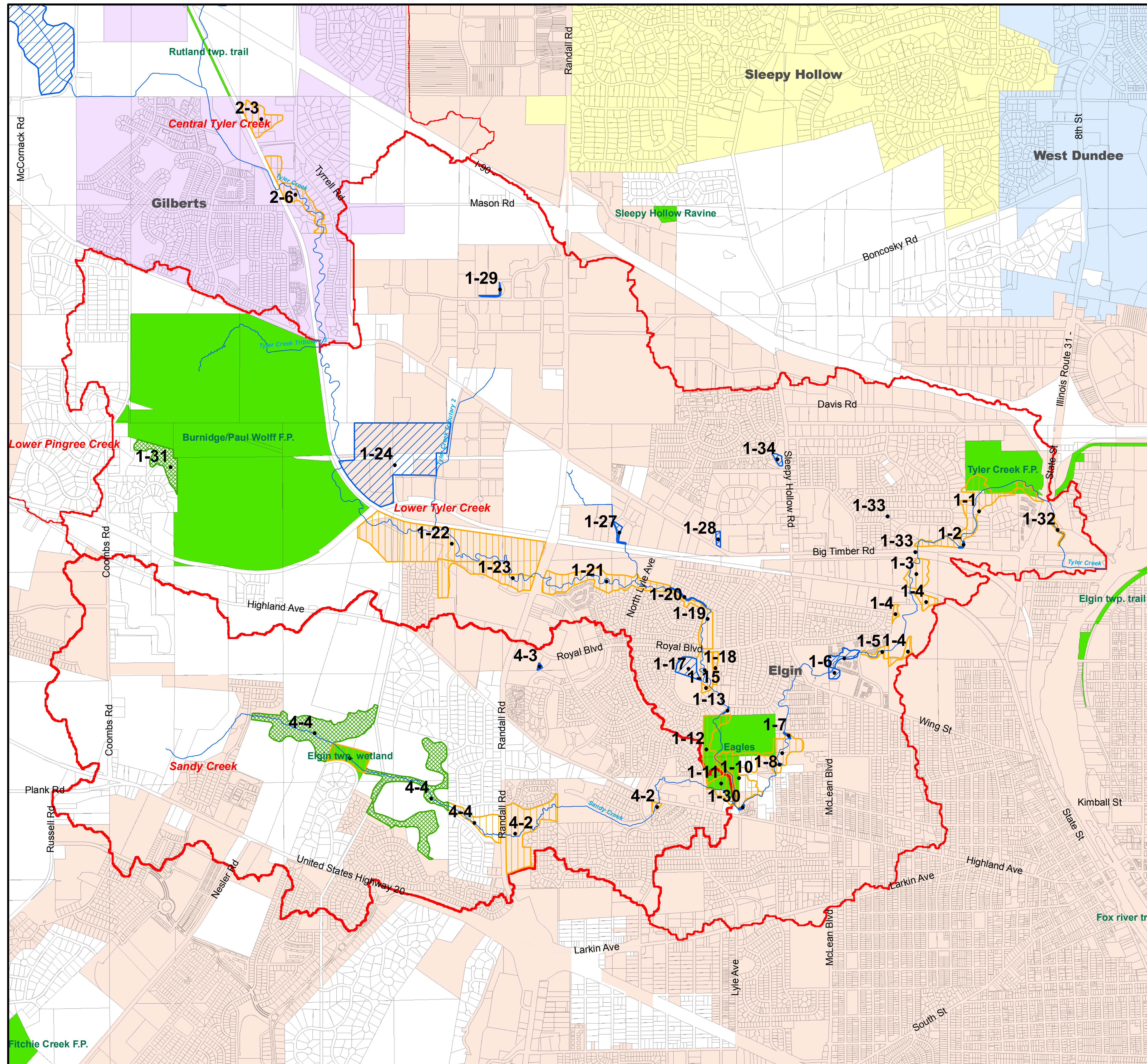


# Subwatershed Protection Recommendations

## Tyler Creek Watershed Plan

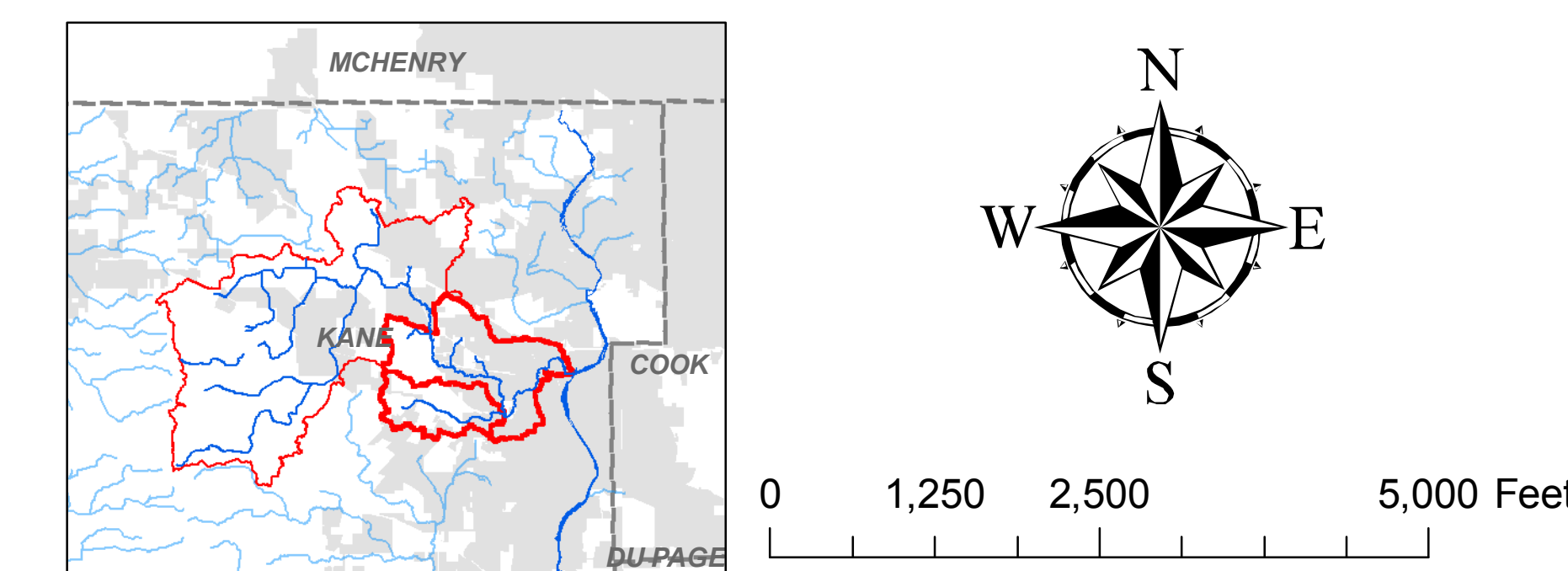
### Lower Tyler Creek & Sandy Creek Subwatersheds



REC NUMBER	TYPE	RECOMMENDATION
1-1	Restoration	Bottomland Woods Restoration on Public and Private Property
1-2	Water Quality	Streambank stabilization - 155 LF on Private Property / Big Timber R.O.W.
1-3	Restoration	Wetland and Upland Woods Restoration on Public Property
1-4	Restoration	Upland woods restoration at Wing Park
1-4	Restoration	Upland woods restoration at Wing Park
1-4	Restoration	Upland woods restoration at Wing Park
1-5	Water Quality	Implement channel relocation and stabilization plan on Private Property
1-5	Restoration	Implement stream corridor restoration plan on Private Property
1-6	Water Quality	Construct water quality facility project at Illinois Park Elementary School
1-7	Water Quality	Streambank Stabilization - 150 LF on Public and Private Property
1-8	Water Quality	Storm sewer outfall repair
1-9	Restoration	Bottomland woods restoration on Private Property
1-10	Restoration	Upland woods restoration at Eagles F.P. and Private Property
1-11	Restoration	Bottomland woods restoration at Eagles F.P. and Private Property
1-12	Restoration	Upland woods restoration at Eagles F.P.
1-13	Water Quality	Streambank stabilization on Private Property
1-15	Restoration	Upland woods restoration at Creekside School
1-16	Restoration	Bottomland woods restoration on City of Elgin Property
1-17	Water Quality	Construct water quality facility project at Valley Creek Subdivision storm outfall
1-18	Restoration	Prairie restoration on Private Property
1-19	Restoration	Bottomland woods restoration on Public and Private Property
1-20	Water Quality	Streambank stabilization as needed where Tyler has meandered out of publicly owned corridor
1-21	Restoration	Stream corridor restoration and stabilization on private property scheduled for development
1-22	Restoration	Upland woods and wetland restoration on City of Elgin Property
1-23	Restoration	Upland woods and wetland restoration on Private Property
1-24	Water Quality	Encourage implementation of stormwater conservation practices to minimize excess runoff and water pollution from business park
1-27	Water Quality	Install water quality controls to clean parking lot runoff before it enters stream
1-28	Water Quality	Retrofit dry bottom detention; remove concrete low flow channel
1-29	Water Quality	Retrofit dry bottom detention with native vegetation
1-30	Water Quality	Streambank stabilization on Private Property
1-31	Permanent Habitat Protection	Permanently protect privately owned portions of ADID Wetland 1322
1-32	Restoration	Remove concrete seawalls and dam and restore natural stream bank vegetation
1-33	Water Quality	Storm Sewer Outfall BMP Retrofit Program
1-33	Water Quality	Storm Sewer Outfall BMP Retrofit Program
1-33	Water Quality	Storm Sewer Outfall BMP Retrofit Program
1-34	Water Quality	Retrofit part of dry bottom detention basin for low flow WQ treatment
2-1	Water Quality	Proactive Water Quality BMP and Green Infrastructure planning for future developments
2-2	Water Quality	Preserve existing flood storage. Implement proactive Water Quality BMP and Green Infrastructure planning for future developments
2-3	Restoration	Protect and restore high quality ADID Wetland 487
2-4	Permanent Habitat Protection	Permanently protect high quality ADID Wetland 404
2-4	Permanent Habitat Protection	Permanently protect high quality ADID Wetlands 385 and 386
2-5	Water Quality	Investigate feasibility of reconfiguring existing wetland to maximize water quality treatment functions for upstream urban runoff
2-6	Restoration	Protect and restore Tyler Creek stream corridor on private property
2-7	Water Quality	Retrofit dry bottom detention basin

#### Legend

- Tyler Creek
- Tyler Recommendations
- Type
  - Permanent Habitat Protection
  - Restoration
  - Water Quality
  - Tyler Watershed Boundary
- Municipal Boundaries
- Name
  - Algonquin
  - Carpentersville
  - East Dundee
  - Elgin
  - Gilberts
  - Hampshire
  - Huntley
  - Pingree Grove
  - Sleepy Hollow
  - South Elgin
  - West Dundee
  - Kane Co. F.P.



This map was prepared by WRC, Inc. for the Tyler Creek Watershed Committee and funded in part by the Illinois EPA Section 319 Grant Program. Sources of data for this map include IEPA, IDNR, NRCS, Kane County GIS Technologies, Kane County Dept of Environmental Management, Village of Gilberts, Village of Pingree Grove, and the City of Elgin. Prepared June 2007. Date of Aerial Photography: Spring 2005