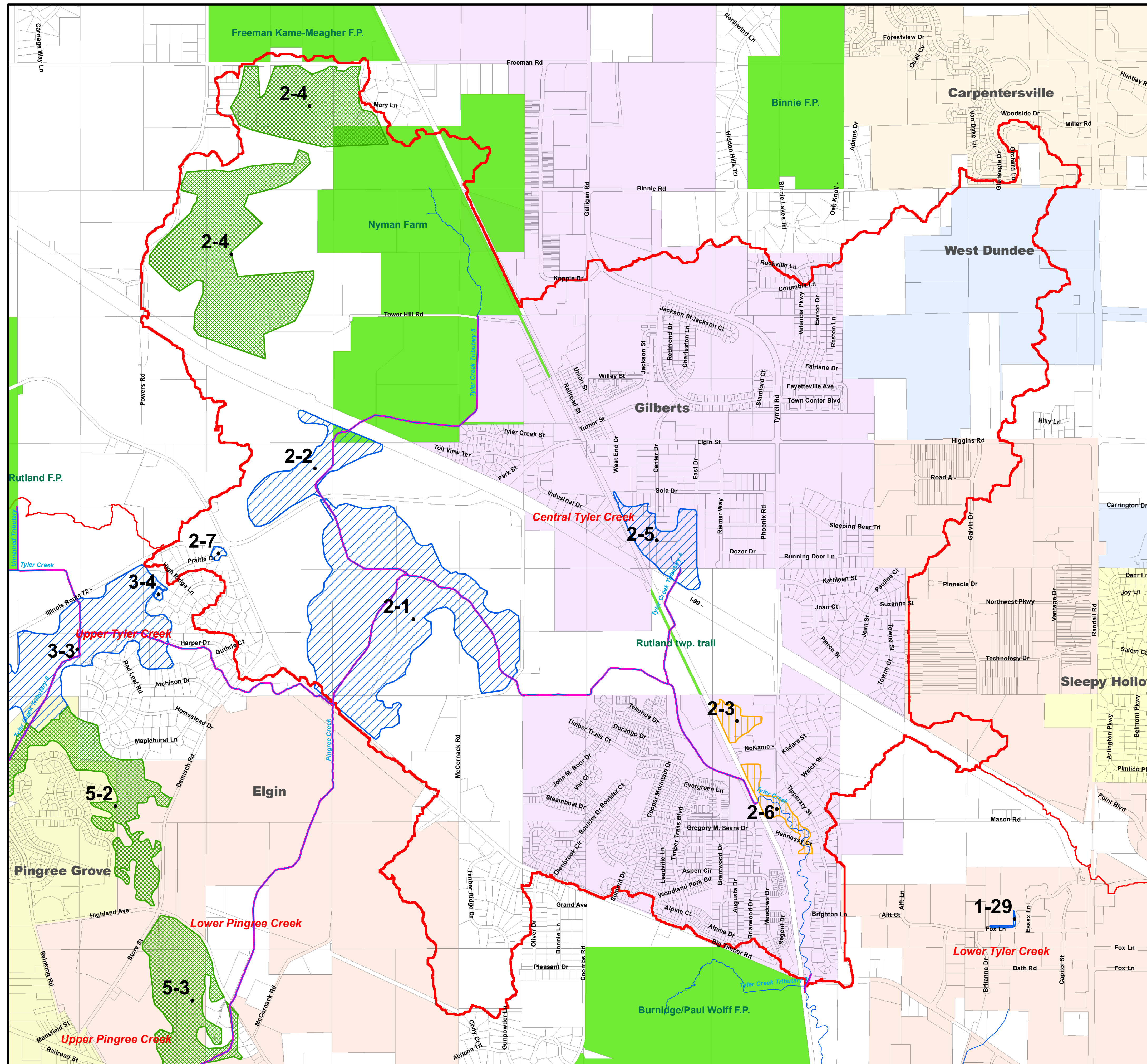


Subwatershed Protection Recommendations

Tyler Creek Watershed Plan

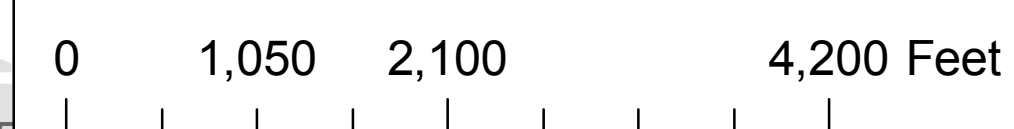
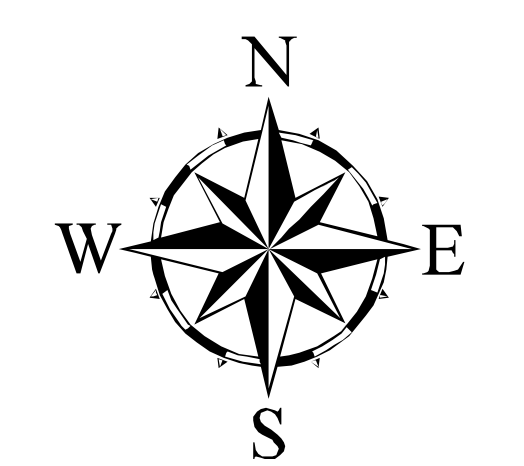
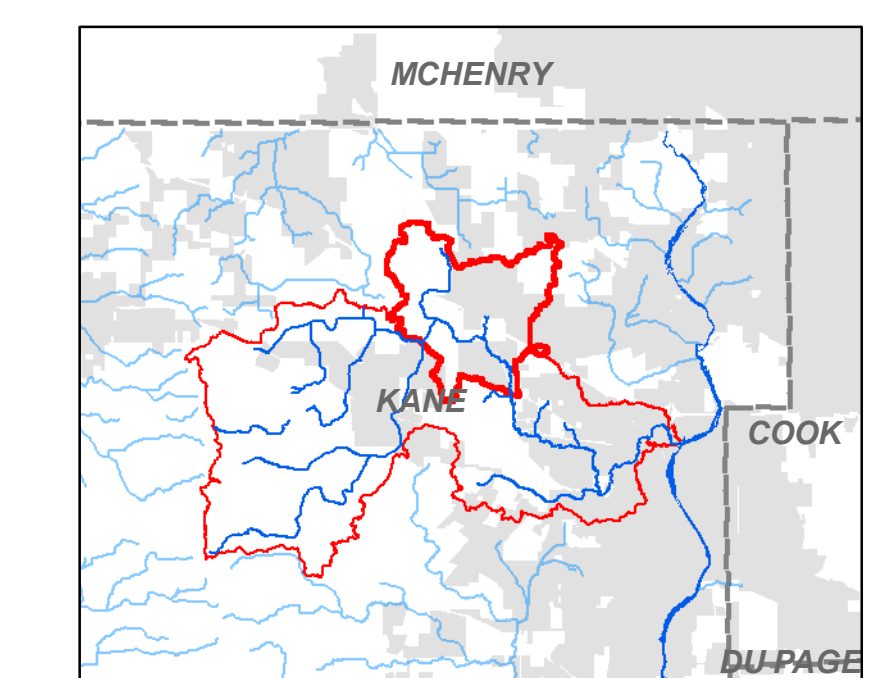
Central Tyler Creek Subwatershed



| REC NUMBER | TYPE | RECOMMENDATION |
|------------|------------------------------|---|
| 2-1 | Water Quality | Proactive Water Quality BMP and Green Infrastructure planning for future developments |
| 2-2 | Water Quality | Preserve existing flood storage. Implement proactive Water Quality BMP and Green Infrastructure planning for future developments |
| 2-3 | Restoration | Protect and restore high quality ADID Wetland 487 |
| 2-4 | Permanent Habitat Protection | Permanently protect high quality ADID Wetland 404 |
| 2-4 | Permanent Habitat Protection | Permanently protect high quality ADID Wetlands 385 and 386 |
| 2-5 | Water Quality | Investigate feasibility of reconfiguring existing wetland to maximize water quality treatment functions for upstream urban runoff |
| 2-6 | Restoration | Protect and restore Tyler Creek stream corridor on private property |
| 2-7 | Water Quality | Retrofit dry bottom detention basin |

Legend

- Tyler Creek
- Channelized
- Tyler_Recommendations Type**
 - Permanent Habitat Protection
 - Restoration
 - Water Quality
 - Kane Co. F.P.
 - Central Tyler SW
 - Tyler Watershed Boundary
- Municipal Boundaries Name**
 - Algonquin
 - Carpentersville
 - East Dundee
 - Elgin
 - Gilberts
 - Hampshire
 - Huntley
 - Pingree Grove
 - Sleepy Hollow
 - South Elgin
 - West Dundee



This map was prepared by WRC, Inc. for the Tyler Creek Watershed Committee and funded in part by the Illinois EPA Section 319 Grant Program. Sources of data for this map include IEPA, IDNR, NRCS, Kane County GIS Technologies, Kane County Dept of Environmental Management, Village of Gilberts, Village of Pingree Grove, and the City of Elgin. Prepared June 2007. Date of Aerial Photography: Spring 2005