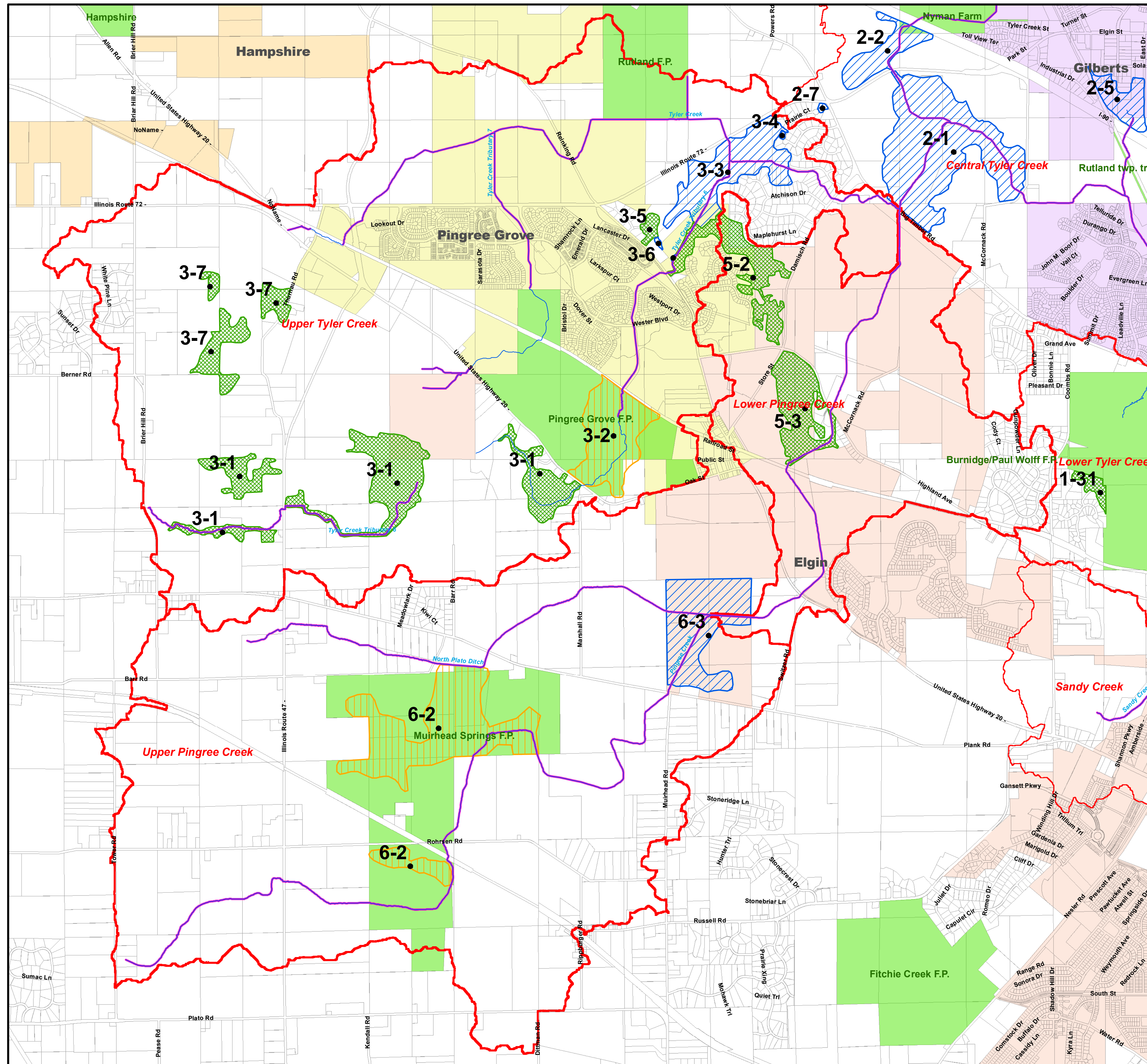


Subwatershed Protection Recommendations

Tyler Creek Watershed Plan

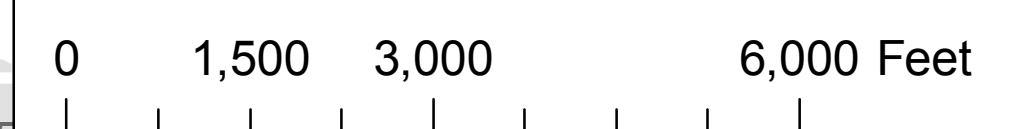
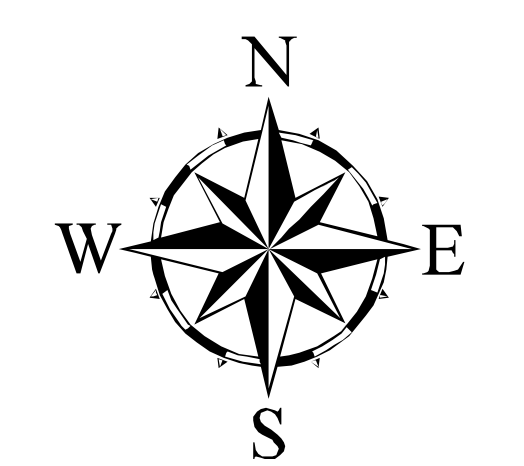
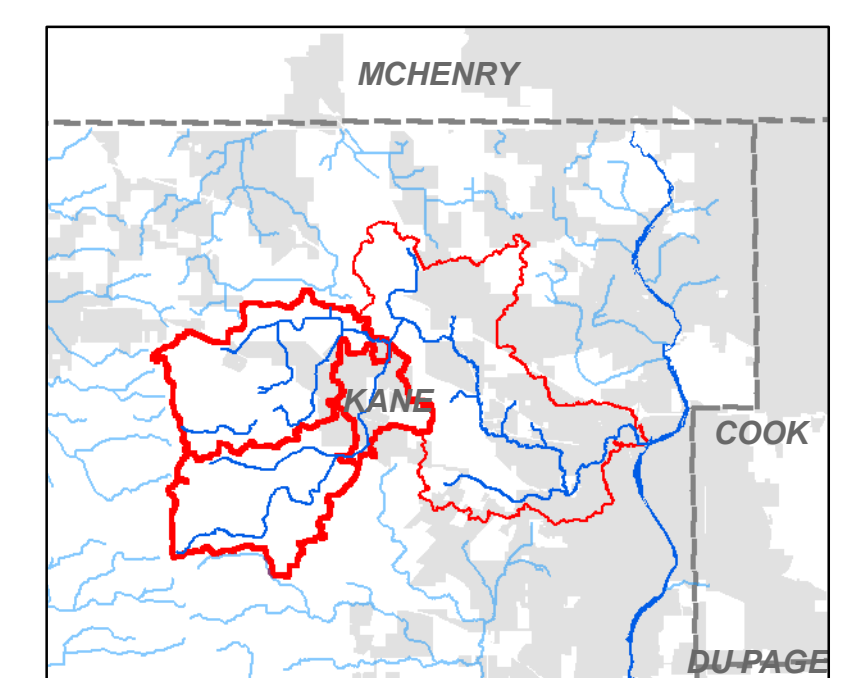
Upper Tyler Creek, Lower Pingree Creek and Upper Pingree Creek Subwatersheds



REC NUMBER	TYPE	RECOMMENDATION
3-1	Permanent Habitat Protection	Permanently protect and restore ADID Wetland 1094
3-1	Permanent Habitat Protection	Permanently protect and restore ADID Wetland 1087
3-2	Restoration	Water level control structure and invasive species removal at Pingree F.P. wetland
3-3	Water Quality	Permanently protect ADID Wetland 466; dechannelize and reconfigure to increase pollutant removal and stream water polishing properties
3-4	Water Quality	Retrofit dry bottom detention basin
3-5	Permanent Habitat Protection	Permanently protect ADID Wetland 492
3-6	Water Quality	Investigate possible water pollution source from auto storage on private property
3-6	Water Quality	Investigate possible water pollution source from auto storage on private property
3-7	Permanent Habitat Protection	Protect and restore remaining oak woodlands
3-7	Permanent Habitat Protection	Protect and restore remaining oak woodlands
3-7	Permanent Habitat Protection	Protect and restore remaining oak woodlands
5-2	Permanent Habitat Protection	Permanently protect ADID Wetland 466
5-3	Permanent Habitat Protection	Permanently protect ADID Wetland 535
6-2	Restoration	Reconstruct wetland on KCFP property for habitat and treatment of runoff from future developments upstream
6-2	Restoration	Reconstruct wetland on KCFP property for habitat and treatment of runoff from future developments upstream
6-3	Water Quality	Reconstruct wetlands at future Elgin park site for habitat and treatment of runoff from future upstream development

Legend

- Tyler Creek (Blue line)
- Channelized (Pink line)
- Tyler Recommendations Type:
 - Permanent Habitat Protection (Green cross-hatch)
 - Restoration (Orange vertical lines)
 - Water Quality (Blue diagonal lines)
 - Kane Co. F.P. (Green solid)
 - Tyler Watershed Boundary (Red outline)
- Municipal Boundaries Name:
 - Algonquin (Yellow)
 - Carpentersville (Light Orange)
 - East Dundee (Light Green)
 - Elgin (Light Orange)
 - Gilberts (Purple)
 - Hampshire (Orange)
 - Huntley (Light Green)
 - Pingree Grove (Yellow)
 - Sleepy Hollow (Yellow)
 - South Elgin (Light Green)
 - West Dundee (Blue)



This map was prepared by WRC, Inc. for the Tyler Creek Watershed Committee and funded in part by the Illinois EPA Section 319 Grant Program. Sources of data for this map include IEPA, IDNR, NRCGS, Kane County GIS Technologies, Kane County Dept of Environmental Management, Village of Gilberts, Village of Pingree Grove, and the City of Elgin. Prepared June 2007. Date of Aerial Photography: Spring 2005