

The Tyler Creek Watershed

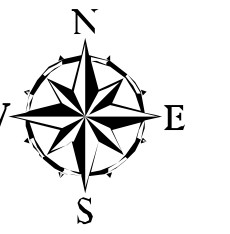
Draft Green Infrastructure Plan

This map represents components of Tyler Creek's green infrastructure, which is made up of the stream corridors, forest preserves, wetlands, floodplains, upland natural areas and corridors of hydric soils. This system of natural, or green infrastructure is essential to sustain the natural character, ecological integrity and water quality of Tyler Creek.

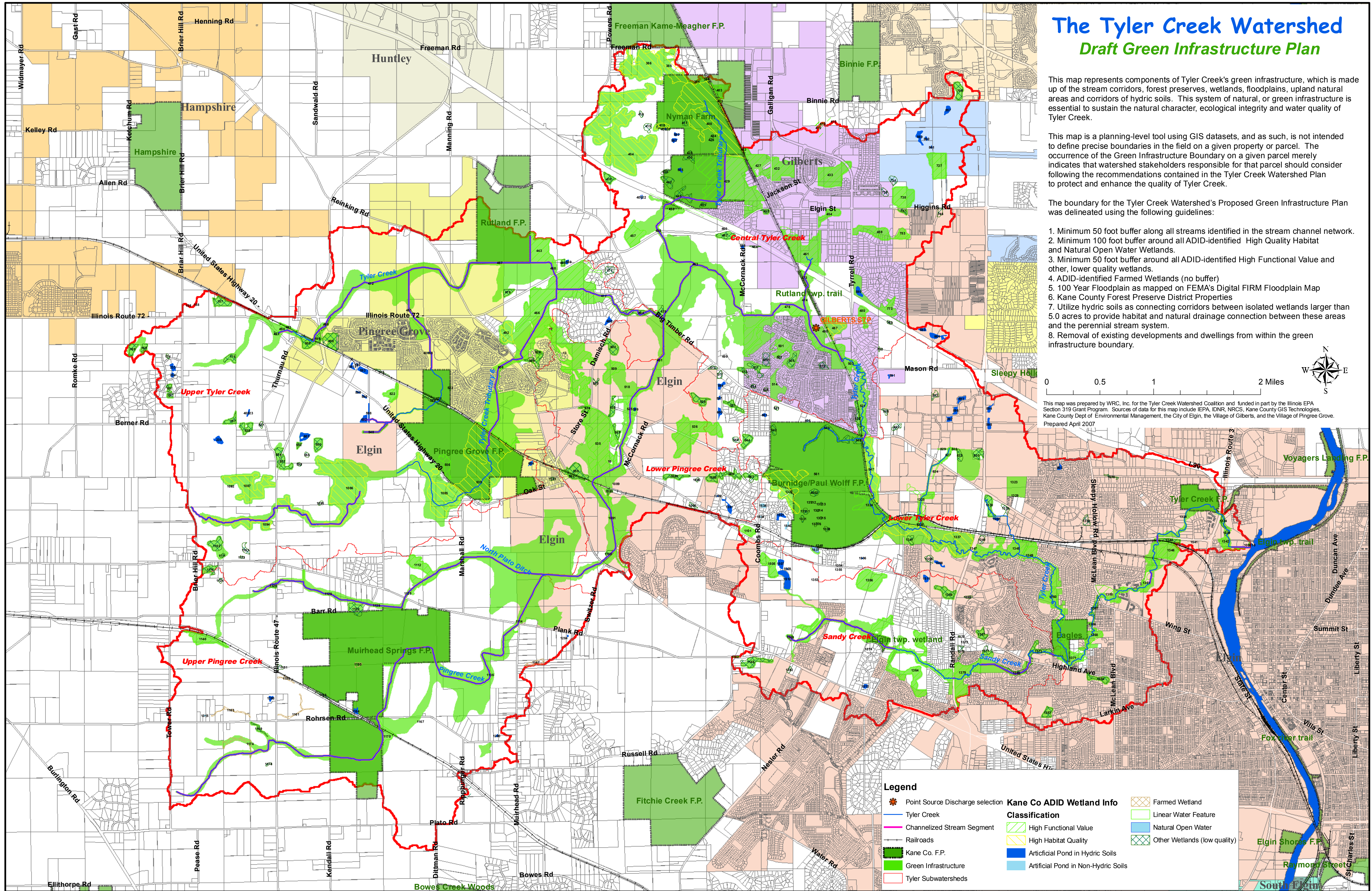
This map is a planning-level tool using GIS datasets, and as such, is not intended to define precise boundaries in the field on a given property or parcel. The occurrence of the Green Infrastructure Boundary on a given parcel merely indicates that watershed stakeholders responsible for that parcel should consider following the recommendations contained in the Tyler Creek Watershed Plan to protect and enhance the quality of Tyler Creek.

The boundary for the Tyler Creek Watershed's Proposed Green Infrastructure Plan was delineated using the following guidelines:

1. Minimum 50 foot buffer along all streams identified in the stream channel network.
2. Minimum 100 foot buffer around all ADID-identified High Quality Habitat and Natural Open Water Wetlands.
3. Minimum 50 foot buffer around all ADID-identified High Functional Value and other, lower quality wetlands.
4. ADID-identified Farmed Wetlands (no buffer)
5. 100 Year Floodplain as mapped on FEMA's Digital FIRM Floodplain Map
6. Kane County Forest Preserve District Properties
7. Utilize hydric soils as connecting corridors between isolated wetlands larger than 5.0 acres to provide habitat and natural drainage connection between these areas and the perennial stream system.
8. Removal of existing developments and dwellings from within the green infrastructure boundary.



This map was prepared by WRC, Inc. for the Tyler Creek Watershed Coalition and funded in part by the Illinois EPA Section 319 Grant Program. Sources of data for this map include IEPA, IDNR, NRCS, Kane County GIS Technologies, Kane County Dept. of Environmental Management, the City of Elgin, the Village of Gilberts, and the Village of Pingree Grove. Prepared April 2007



Point Source Discharge selection	Kane Co ADID Wetland Info	Farmed Wetland
Tyler Creek	Classification	Linear Water Feature
Channelized Stream Segment	High Functional Value	Natural Open Water
Railroads	High Habitat Quality	Other Wetlands (low quality)
Kane Co. F.P.	Artificial Pond in Hydric Soils	
Green Infrastructure	Artificial Pond in Non-Hydric Soils	
Tyler Subwatersheds		