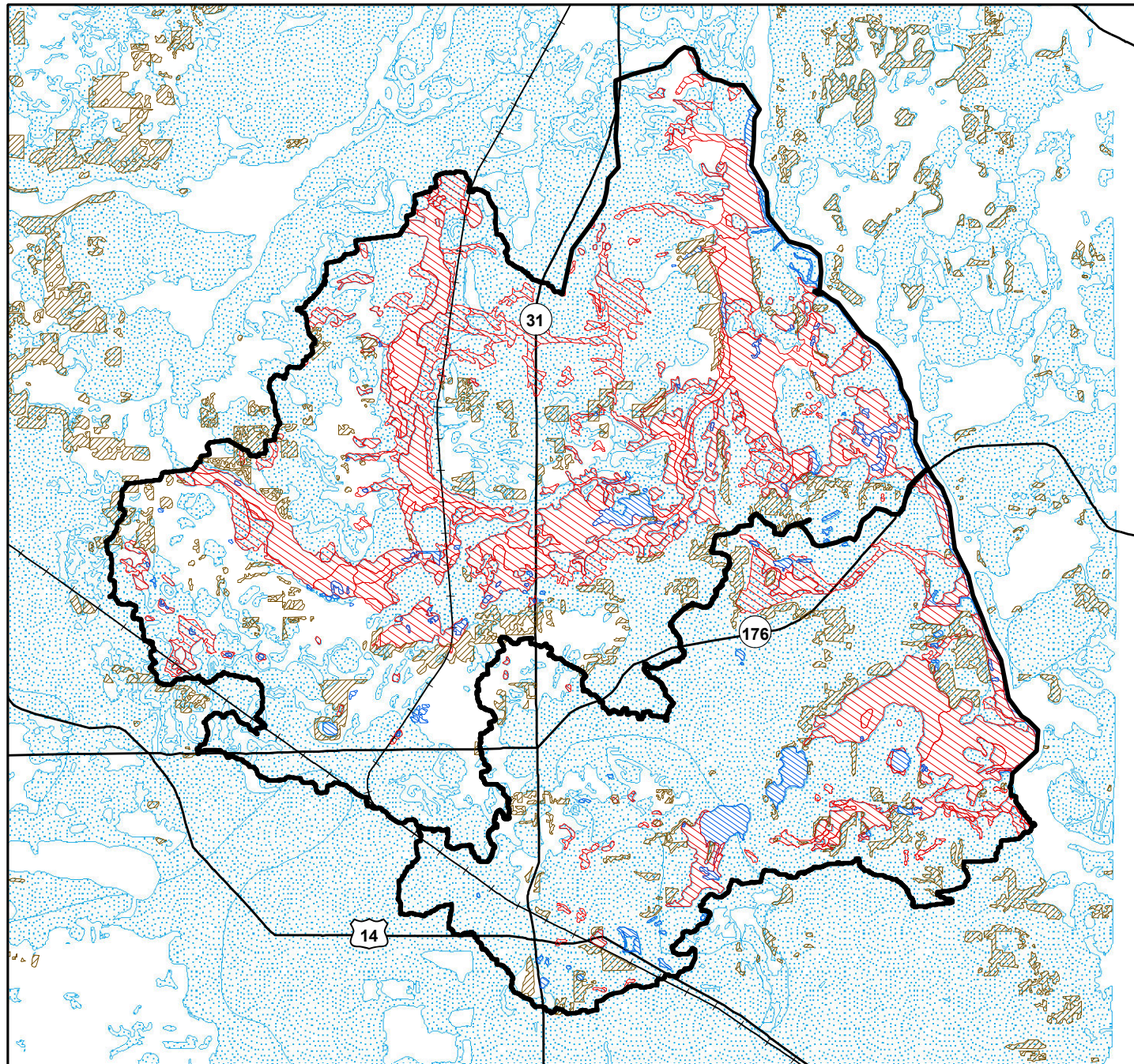
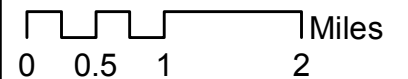
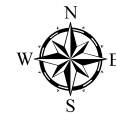


Hydric Soils, Sensitive Aquifer Recharge Areas, & Oak Stands in the Sleepy Hollow & Silver Creek Watershed Planning Area



Legend

- Watershed Plng Area_SH
- Watershed Plng Area_SC
- Oak stands
- Hydric Soils**
 - unknown
 - Not hydric
 - Hydric
- Sensitive Aquifer Recharge Areas



Data Sources: [in DRAFT] Watershed Planning Areas - CMAP & ISWS; Hydric soils - NRCS; Sensitive Aquifer Recharge Areas - McHenry Co; Oaks - MCCD 2005.

Map Date: Feb. 8, 2011 - ME; rev. Mar. 9, 2011 - HH



Chicago Metropolitan Agency for Planning