

Sleepy Hollow Creek and Silver Creek Watershed Inventories

April 13, 2011

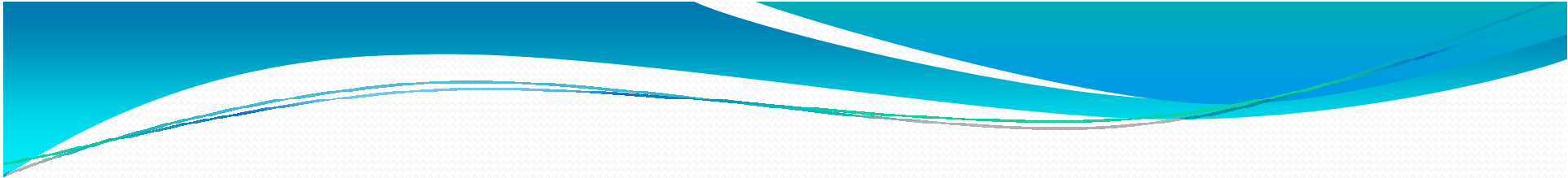
Silver and Sleepy Hollow Creek Watershed Resource Inventory

as of April 5, 2011

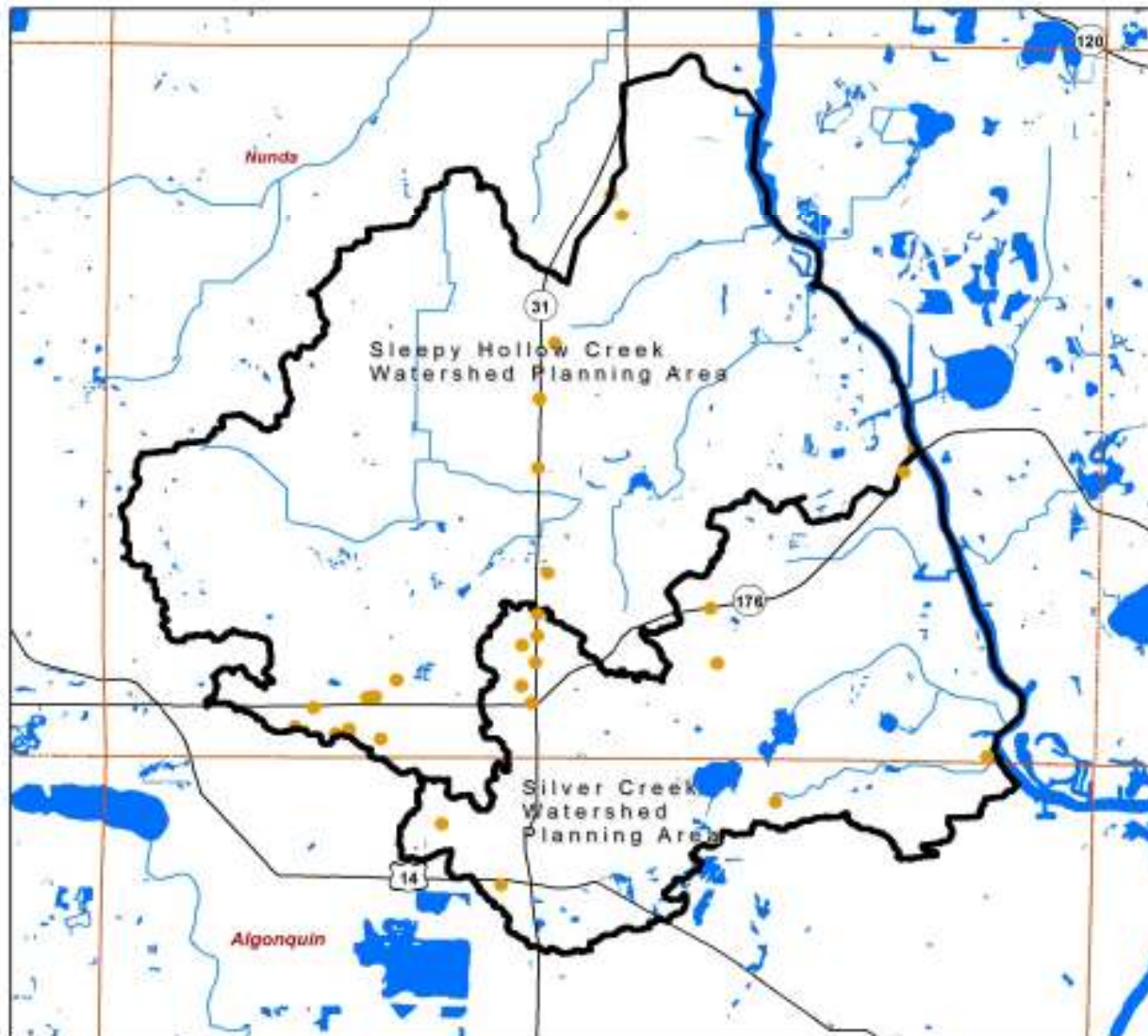
		Watershed Planning Area (s)	
		Sleepy Hollow Creek	Silver Creek
Data Category	Sources		
Physical and Natural Features			
Watershed boundaries		✓	✓
Aquifers	McHenry County	✓	✓
Illinois Nature Preserves	IDNR/CMAP	✓	✓
Illinois Natural Areas Inventory	IDNR/CMAP	✓	✓
McHenry County Natural Areas Inventory (cNAI)	McHenry County	✓	✓
McHenry County Conservation District	McHenry County	✓	✓
Land Conservancy Land (McHenry Co.)	McHenry County	✓	✓
Oak Stands	McHenry County Conservation District	✓	✓
Park Districts	McHenry County	✓	✓
Sensitive Aquifer Recharge Areas	McHenry County	✓	✓
Hydrology			
Streams	USGS, ISWS	✓	✓
Lakes	USGS, ISWS	✓	✓
Wetlands	McHenry Co. ADID, NRCS/McHenry County	✓	✓
Topography	McHenry Co.	✓	✓
Soils	NRCS	✓	✓
Excessive Permeability (Cropland Limitations)	USDA	✓	✓
Hydrologic Soil Groups (D,E,F)		in progress	in progress
Floodplain boundaries	FEMA	✓	✓
Climate	ISWS, NOAA (www.ncdc.noaa.gov/oa/climate/climatedata.html)	✓	✓

Habitat:		
Fox River	IEPA/IDNR basin surveys, McHenry County	✓
Tributary streams	Sleepy Hollow Crk, unnamed trib-- vol Stream Teams	in progress
Tributary streams	Silver Crk, "Prairie" Crk, Fel-Pro Crk-- vol Stream Teams	
Upland areas	MCCD, IDNR, local govt's...	pending
Wildlife:		
Fish (Fox River)	IDNR	✓
Fish (streams)	IDNR, USACE, MCCD	✓
Fish (lakes)	IDNR (Atwood, Killarney, Silver)	n/a
	Crystal Lake Pk Dist. (Veteran Acres Pond)	✓
Macroinvertebrates (streams)	IEPA/IDNR basin surveys, MCCD	✓
Macroinvertebrates (lakes)	IEPA-ALMP, MCCD	n/a
Threatened and Endangered Species	IDNR	✓
Mammals, Herps	MCCD	✓
Land Use and Population Characteristics		
Land use (existing & future)	County, Township, Municipal Govt's & Districts; CMAP	✓
Land cover (existing & future)	USGS, IDNR, CMAP	✓
Existing land management practices	County, Township, Municipal Govt's & Districts	✓
local ordinances	County, Township, Municipal Govt's & Districts	✓
land & water conservation measures	County, Township, Municipal Govt's & Districts	✓
master plans/comprehensive plans	County, Township, Municipal Govt's & Districts	✓
resource management plans	City of Crystal Lake, Nunda Township	✓
stormwater pollution prevention plans		pending
Demographics	U.S. Census Bureau	✓
Waterbody and Watershed Conditions		
Water quality standards	Illinois Pollution Control Board	✓
305(b) report	IEPA	✓
303(d) list	IEPA	✓
Existing TMDL reports	IEPA- Upper Fox River TMDL	✓
Source water assessments	IEPA	✓
Groundwater/Surface water	ISWS and ISWS Groundwater Section	✓

Pollutant Sources			
Point sources:			
WWTPs	IEPA/NPDES Permit/DMR reports/Pretreatment Program	✓	n/a
Combined Sewer Overflows	Fox River Watershed GIS Data Viewer	✓	✓
Industrial pt sources	IEPA/NPDES Permit	✓	n/a
Nonpoint sources:			
urban sources (impervious cover)	CMAP	✓	✓
cropland sources	McHenry Co SWCD	✓	✓
livestock sources incl. Horse Farms	McHenry Co SWCD	pending	pending
onsite wastewater (septic) systems	Septic system compliance/McHenry Co. & Kane Co.	✓	✓
wildlife sources		✓	✓
silviculture, mining, other sources		✓	✓
Stormwater outfalls	Municipalities/Counties within each watershed	pending	pending
Leaking underground storage tanks	IEPA	✓	✓
Waterbody Monitoring Data			
Water quality - Fox River, streams	IEPA Antidegradation Reports	✓	✓
	IEPA/IDNR basin survey	✓	✓
Water quality - lakes	IEPA - ALMP, VLMP	n/a	✓
	MCCD (bathing beaches)	n/a	---
Water quality - groundwater	IEPA, McHenry Co., municipalities, water suppliers	pending	pending
Sediment quality - streams, lakes	IEPA	pending	pending
Biology:			
Aq plants in lakes (FQI)	Lk Killarney- IEPA	n/a	✓
	Silver Lk- CMAP	n/a	✓
	Atwood, West- MCCD?	n/a	pending
	Lk Thunderbird	n/a	pending
Lake geomorphology	IDNR, local sources, CMAP	✓	✓
Stream geomorphology	Sleepy Hollow Crk, unnamed trib-- vol Stream Teams	in progress	
	Silver Crk, "Prairie" Crk, Fel-Pro Crk-- vol Stream Teams		in progress



Base Map Information			
Roads/Road center lines	NAVTEQ	✓	✓
Townships	CMAP	✓	✓
Sections	CMAP	✓	✓
Parcel Boundaries	CMAP & County GIS data	✓	✓
Municipal boundaries	Municipal & CMAP GIS Data	✓	✓
County boundaries	County & CMAP GIS Data	✓	✓
Other			
Storm sewer systems	McHenry County/Municipalities	in progress	in progress
Detention/retention basins	McHenry County/Municipalities	in progress	in progress



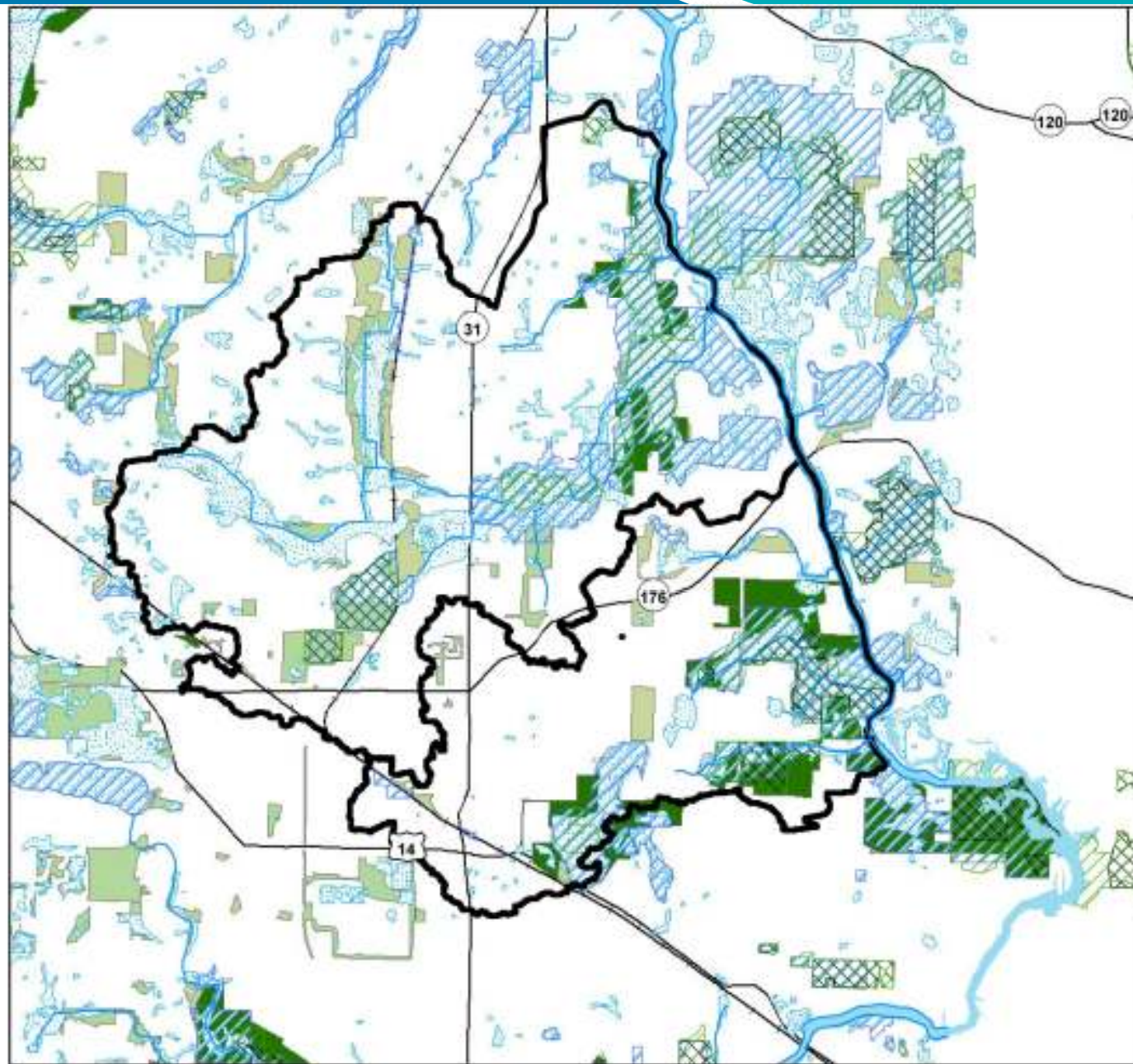
-  Sleepy Hollow Creek Watershed Planning Area
-  Silver Creek Watershed Planning Area
-  Township Lines
-  LUST Sites



Chicago Metropolitan Agency for Planning

Sources: Watershed Planning Area - Illinois State Water Survey (2005) and CMAP (2010); Major Roads - ESRI (2000); Water Features - National Hydrography Dataset - United States Geological Survey (2007) and McHenry County ADID Streams - NIPC and McHenry County (1999); Township Lines - NIPC; LUST Sites - Illinois EPA (2010).

Existing and Proposed Protected Open Space



- Watershed Planning Area
- Illinois Natural Areas Inventory
- Illinois Nature Preserves
- McHenry Co Natural Areas Inventory
- McHenry County ADID, 2005
- McHenry County Conservation District
- Nunda Township Land Use**
 - Protected Open Space
- Crystal Lake Land Use**
 - Parks and Open Space

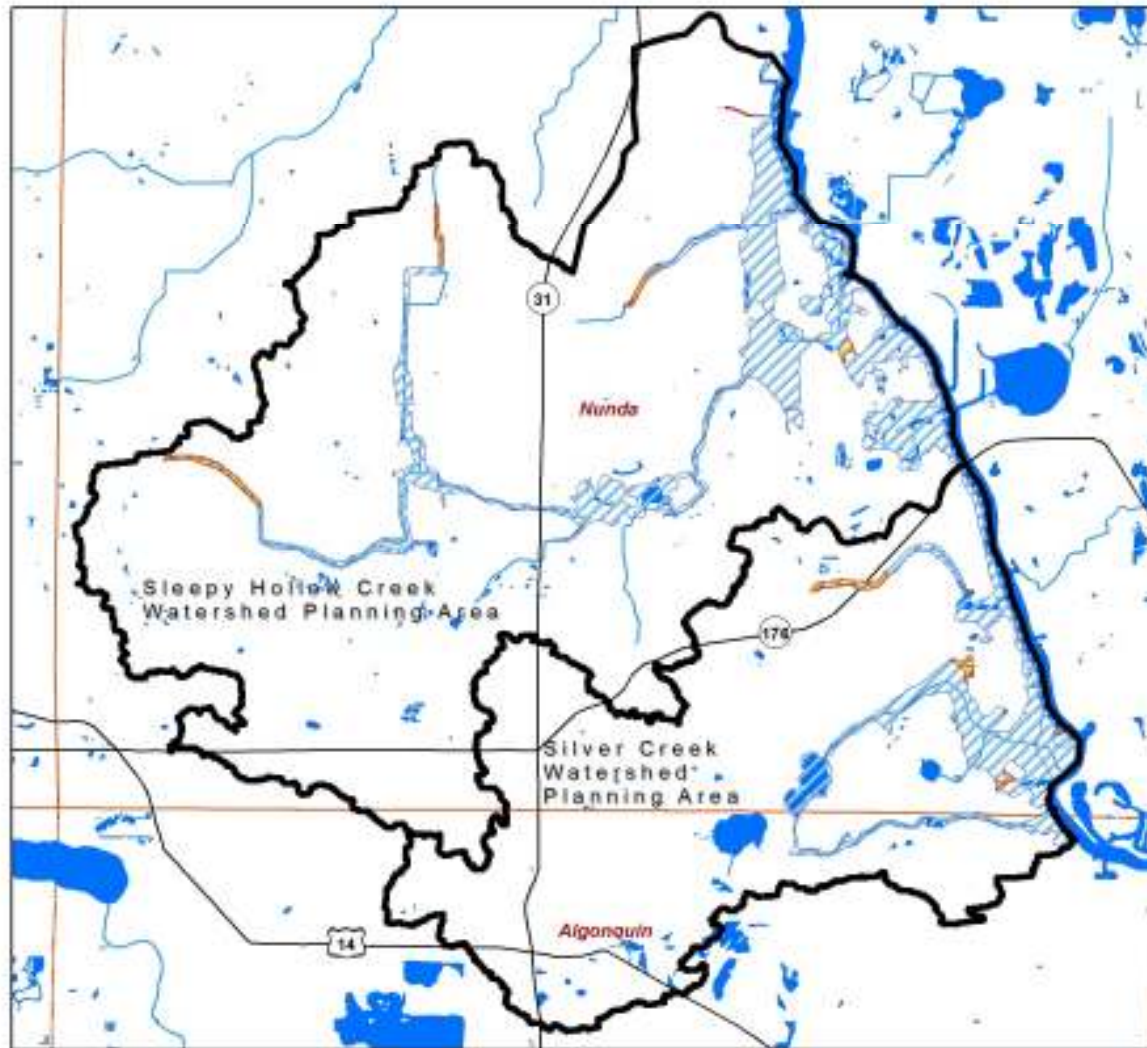
0 0.5 1 Miles



Sources: Illinois Natural Areas Inventory, IDNR, 2010; McHenry County Conservation District, 2010; McHenry County ADID, McHenry County; Nunda Township Comprehensive Plan, 2009-2013; Crystal Lake Land Use, 2020 Comprehensive Plan; Watershed Planning Areas, CMAP and ISWS.



Chicago Metropolitan Agency for Planning

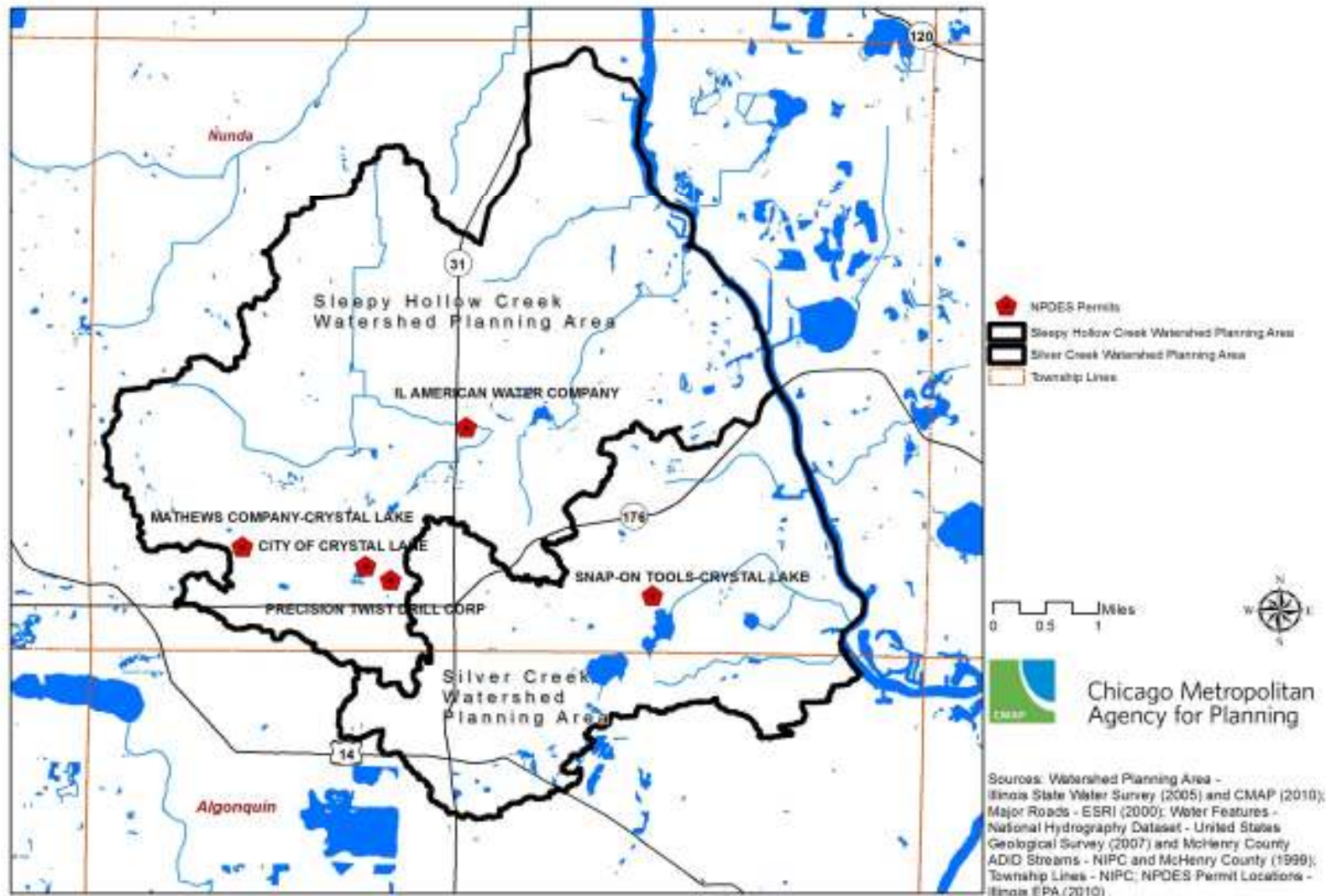


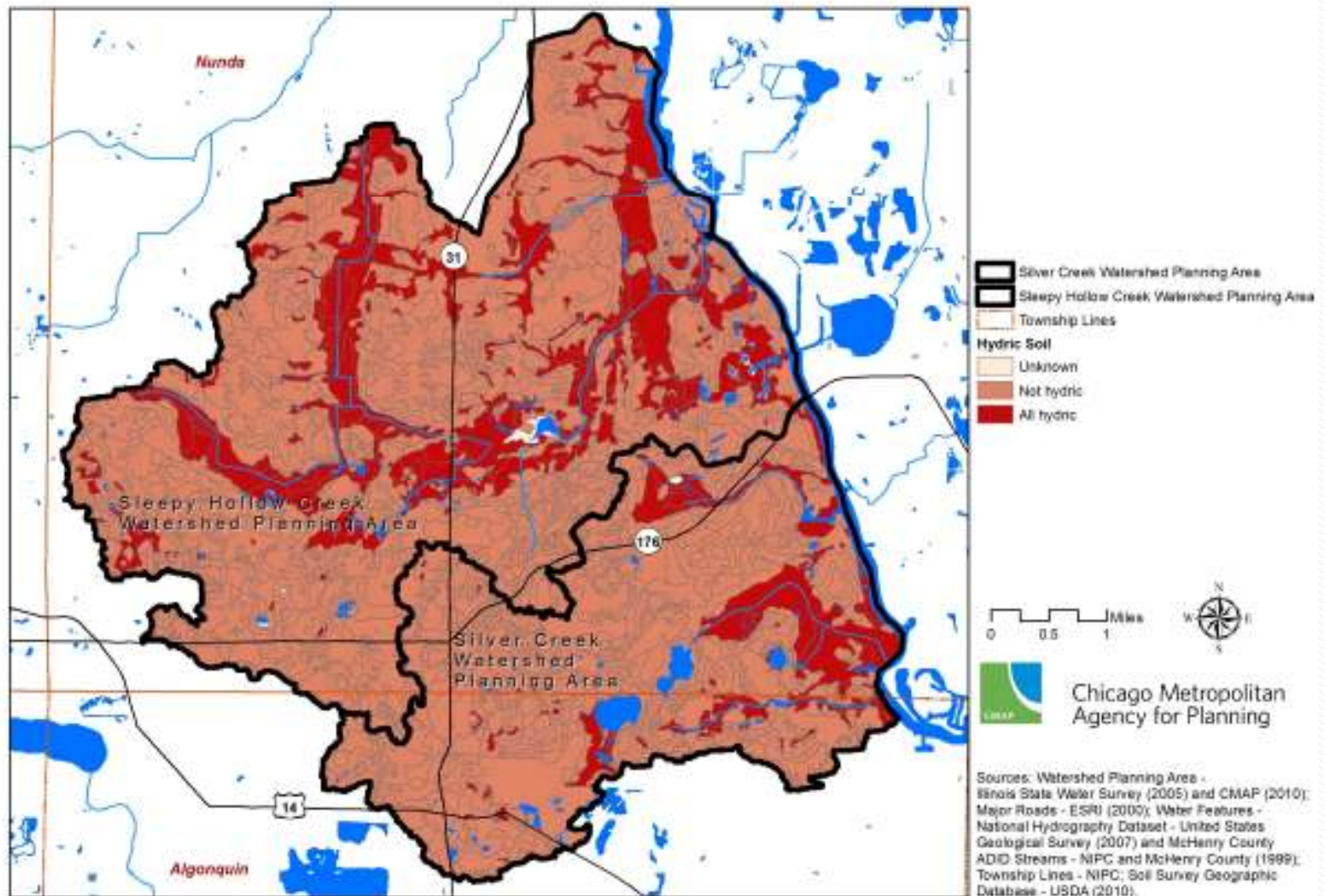
- Silver Creek Watershed Planning Area
- Sleepy Hollow Creek Watershed Planning Area
- FEMA Floodplain**
- 100-Year Floodplain
- 500-Year Floodplain
- Township Lines

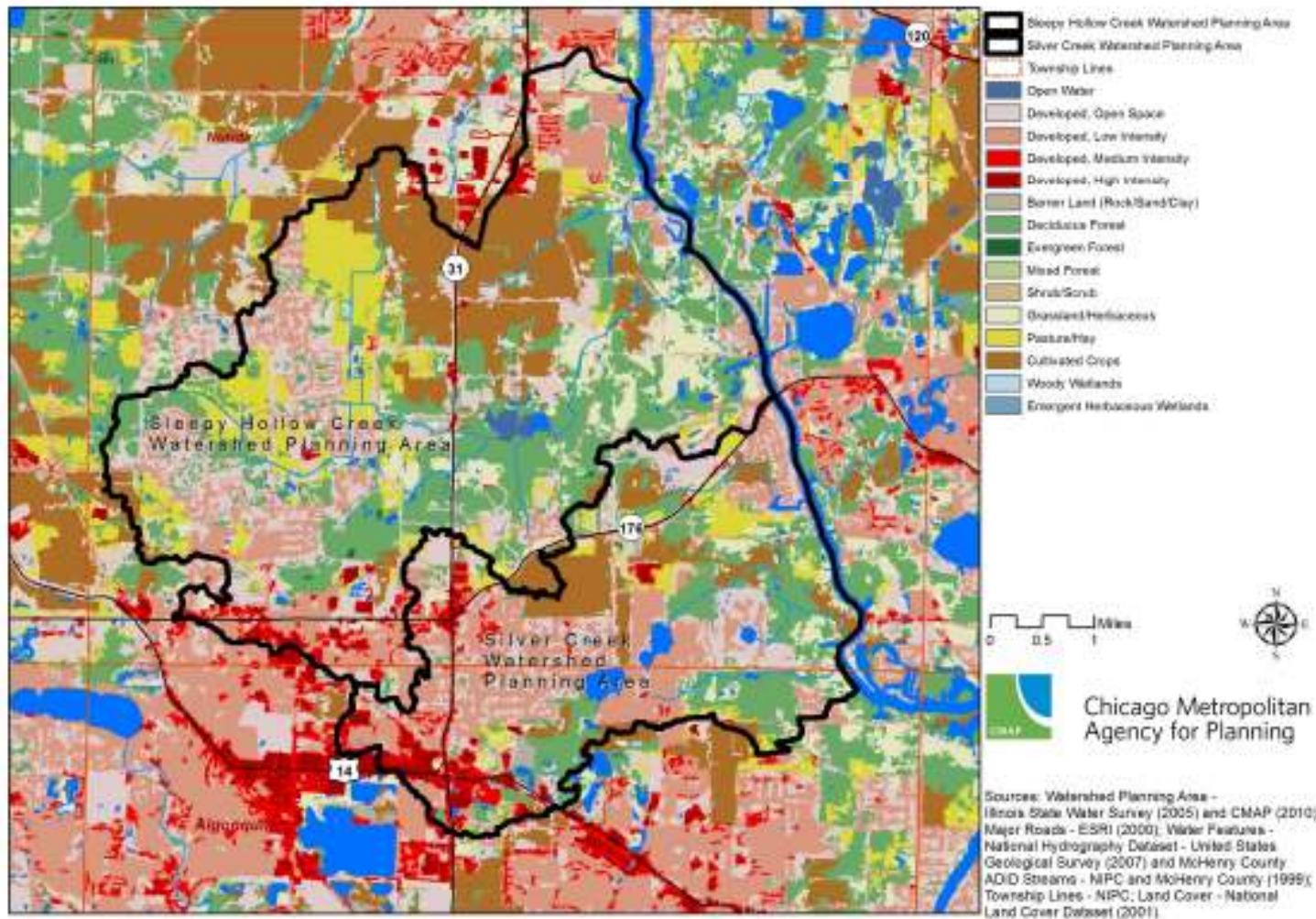


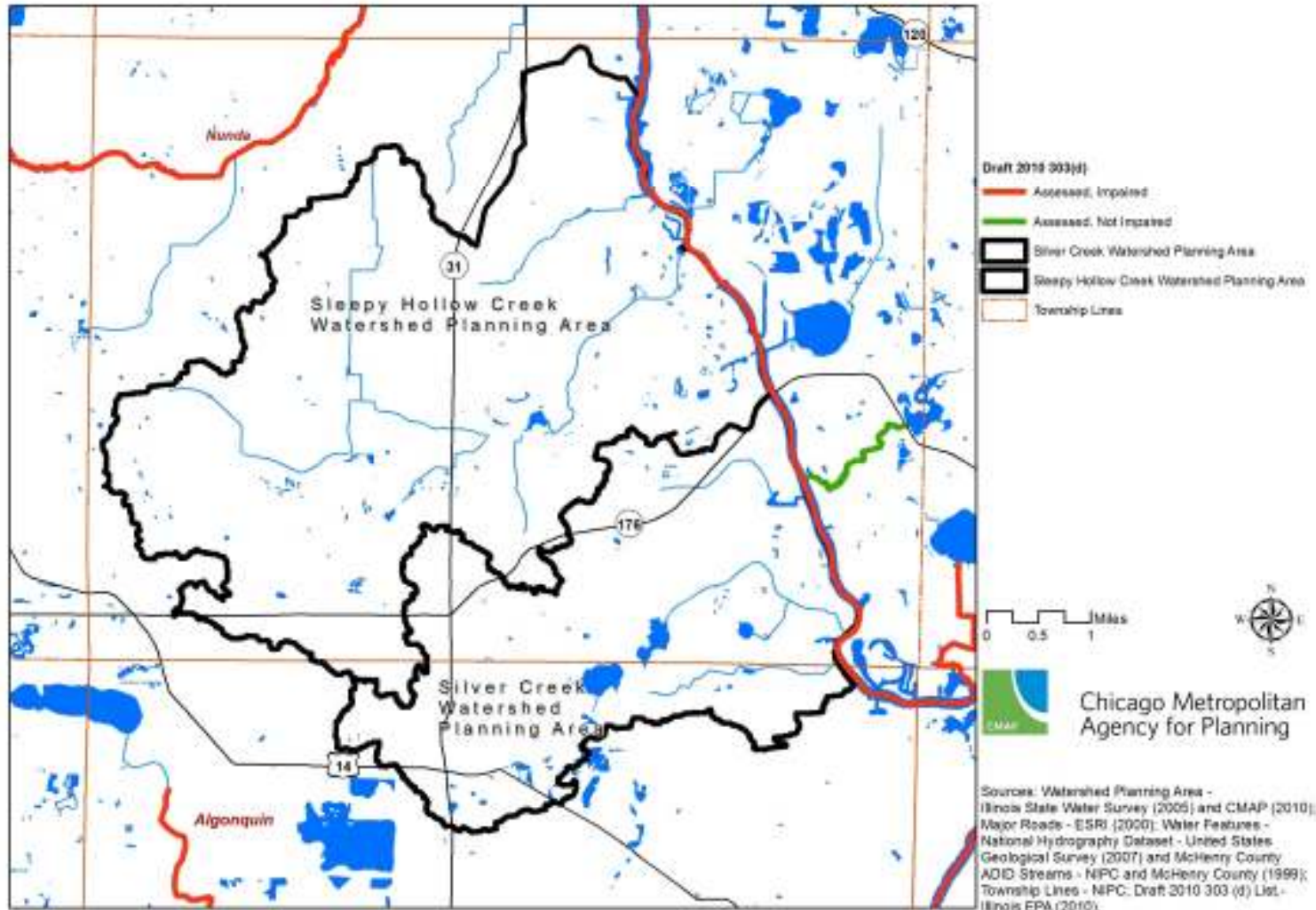
 Chicago Metropolitan Agency for Planning

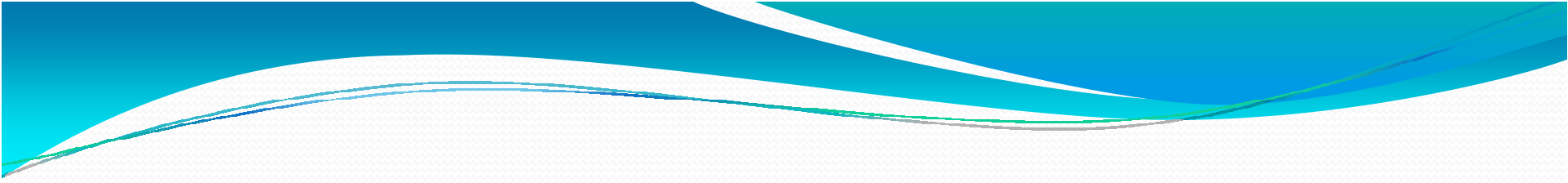
Sources: Watershed Planning Area - Illinois State Water Survey (2005) and CMAP (2010); Major Roads - ESRI (2000); Water Features - National Hydrography Dataset - United States Geological Survey (2007) and McHenry County ADID Streams - NPC and McHenry County (1999); Township Lines - NPC; Floodplain - FEMA (2006).











Dawn Thompson
Sleepy Hollow Creek Project Manager
Chicago Metropolitan Agency for Planning
dthompson@cmap.illinois.gov