

Section 319 Grant Program – Nonpoint Source Pollution Control



presented by
Holly Hudson



Fox River Ecosystem Partnership &
Chicago Metropolitan Agency for Planning



Chicago Metropolitan
Agency for Planning

FREP Noon Network
Feb. 15, 2012

Today's talk...

- Intro to Section 319 grants
- Administrative aspects
 - eligibility, funding, priorities
- Project types
- Application process
 - timeline, required information, tips

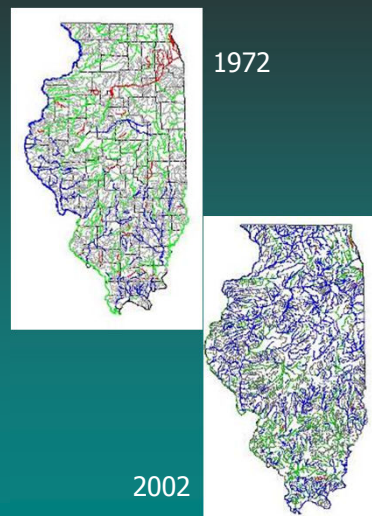
Section 319 grants

- Federal grant program authorized by Section 319(h) of the Clean Water Act
- Administered by U.S. EPA and Illinois EPA

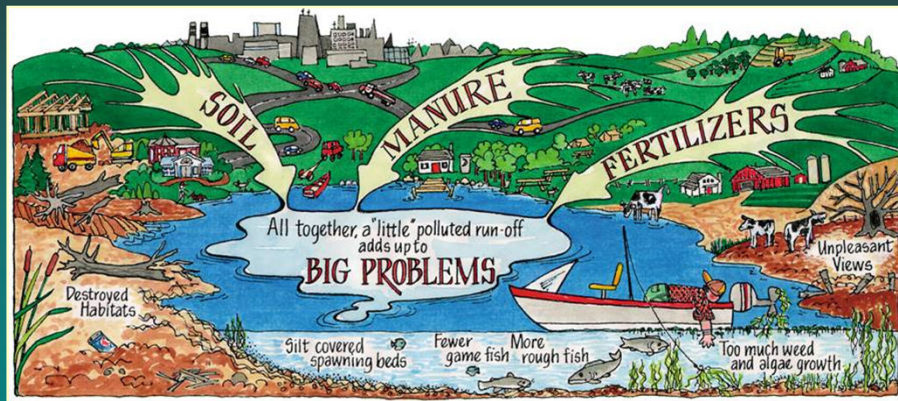


Section 319 grants

- **Purpose:** to work cooperatively with local units of government and other organizations toward our mutual goal of protecting the quality of water in the state of Illinois by controlling nonpoint source (NPS) pollution



Nonpoint Source (NPS) Pollution



Who is Eligible?

- State and local governmental units
- Public and private for-profit and not-for-profit organizations & institutions
- Land conservancies or trusts
- Colleges and universities
- Watershed groups (inc.)
- Individuals

Applicant must have legal status to accept funds from the Illinois EPA



Funding

- Total project costs: any reasonable amount
- Cost share program: max. 60% federal / min. 40% local share

Project	Total cost	319 grant	Local share
A	\$150,000	\$90,000 (60%)	\$60,000 (40%)
B	\$900,000	\$450,000 (50%)	\$450,000 (50%)

- Reimbursement basis
- 2-year grant*

Local Match

- Local funds or in-kind services used to complete appr'd project tasks
 - In-kind services include labor time, machine time, materials
- Any non-Federal funding source (e.g., IDNR Partners for Conservation)
- Recipient, subcontractor, volunteers, project partners



Types of Eligible Projects

High Priority:

- Implementation of activities identified in an IEPA-approved watershed-based plan (WBP) or Total Maximum Daily Load (TMDL) implementation plan
 - BMP installation
 - NPS WQ modeling
 - Environmental monitoring
 - Social indicator monitoring
 - Outreach activities



IEPA-approved Watershed-based Plans in Illinois

Section 319 Biannual Report:

<http://www.epa.state.il.us/water/watershed/reports/biannual-319/index.html>

Click on "September 2011" report link

See lists on pp 11-24:

- Illinois Clean Lakes Program
Phase 1 reports
- Completed WBPs
- Under-development WBPs

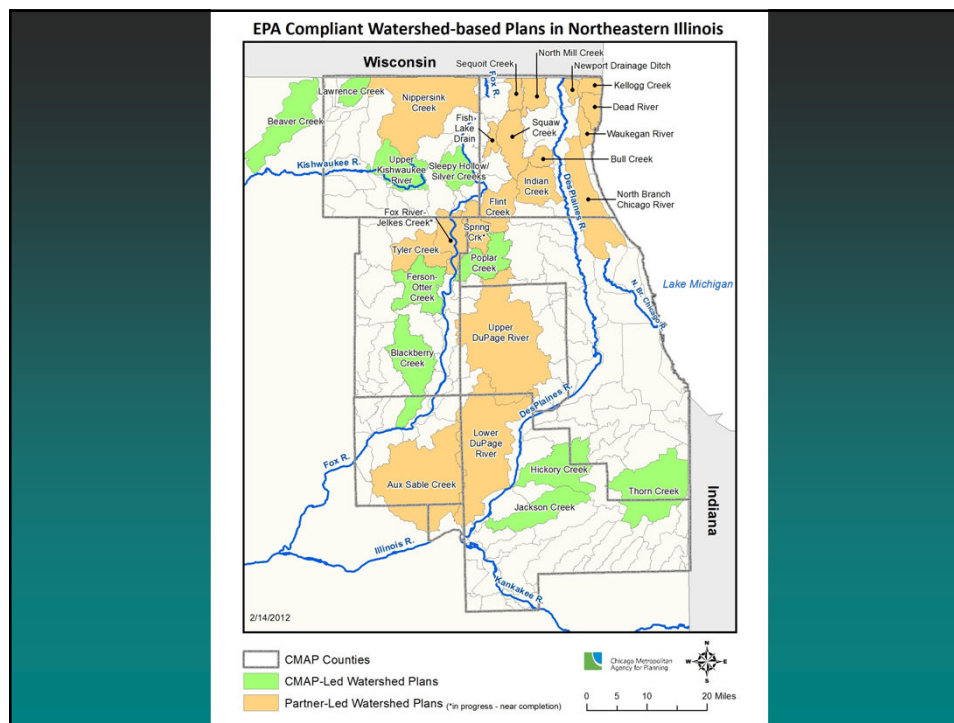


IEPA-approved WBPs within Fox River Watershed

- Nippersink Creek
- Sequoit Creek
- Fish Lake Drain
- Squaw Creek
- Silver & Sleepy Hollow Creek
- Flint Creek
- Spring Creek*
- Fox River-Jelkes Crk*
- Tyler Creek
- Poplar Creek
- Ferson-Otter Creek
- Blackberry Creek

* near completion

<http://foxriverecosystem.org/subwatersheds.htm>



Illinois Clean Lakes Program Phase 1 Diagnostic-Feasibility Study Reports within Fox River Watershed

- Channel Lake & Lake Catherine (Fox Waterway Agency, 2000)
- McCullom Lake (City of McHenry, 1992)
- Crystal Lake (Crystal Lake Park District, 2010)
- Woods Creek Lake (Vlg of Lake in the Hills, 2000)



Types of Eligible Projects *cont.*

High Priority:

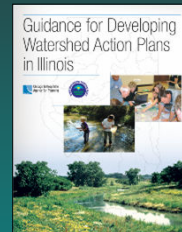
Development of a watershed-based plan to address NPS pollution

Guidance for Developing Watershed Action Plans in Illinois (CMAP & IEPA, 2007)

<http://chicagoareapanning.org/watershed>

Handbook for Developing Watershed Plans to Restore and Protect our Waters (USEPA, 2005)

http://www.epa.gov/owow/nps/watershed_handbook



Watershed Academy Web

<http://www.epa.gov/owow/watershed/wacademy/acad2000/planning/>

9 Minimum Elements of a WBP for Impaired Waters

- Identify causes of impairment and sources of NPS pollutants that need to be controlled to achieve (a) load reductions established in a TMDL, or (b) goals identified in a local watershed plan
- Describe the NPS management measures that will need to be implemented to achieve load reductions, and the critical areas in which those measures will need to be implemented
- Estimate the load reductions expected from management measures

9 Minimum Elements of a WBP (cont.)

- Estimate the amount of technical and financial assistance needed to implement the plan, and which organizations/agencies might have a role in plan implementation and financing
- Include an information and education component to enhance public understanding of the project and encourages public involvement in NPS pollution control
- Include a schedule for implementing the NPS management measures identified in the plan

9 Minimum Elements of a WBP (cont.)

- Include interim, measurable milestones for determining whether NPS management measures are being implemented on schedule
- Provide a set of criteria that can be used to determine whether loading reductions are being achieved over time and if substantial progress is being made toward meeting water quality standards
- Include a monitoring component to evaluate the effectiveness of the implementation efforts over time, measured against the criteria established under the item above

Types of Eligible Projects cont.

High Priority:

Development of a Total Maximum Daily Load (TMDL) or TMDL implementation plan to address NPS pollution

TMDL requirements:

http://www.epa.gov/r5water/wsheds/topics_tmdls.htm

Illinois EPA's TMDL program:

<http://www.epa.state.il.us/water/tmdl>

- Upper Fox River/Chain O'Lakes Watershed TMDL Final Stage 1 Report (2010)
- Upper Fox River/Flint Creek Watershed TMDL Final Stage 1 Report (2010)

Types of Eligible Projects *cont.*

Low Priority:

- NPS pollution control projects not identified in or supported by a watershed-based plan or TMDL implementation plan



Ineligible Projects and Activities

- Do not control, prevent, or address NPS pollution
- Required by mitigation, state or federal law, or state or federal permit
- Purchase of equipment
- Routine maintenance or repair of existing on-site systems
- Principally protect infrastructure, control flooding, or protect wildlife habitat
- Don't meet current USEPA guidelines for Section 319(h) grants

Types of BMPs and activities funded in the past

Streams (rural and urban)

- Channel and bank stabilization
- Meandering a channelized stream
- Levee removal or modification
- Reconnecting stream to floodplain
- Instream habitat restoration



Types of BMPs and activities funded in the past *cont.*

Wetlands (rural and urban)

- Natural wetland restoration or enhancement
- Natural wetland area protection
- New wetland development



Types of BMPs and activities funded in the past *cont.*

Lakes (rural and urban)

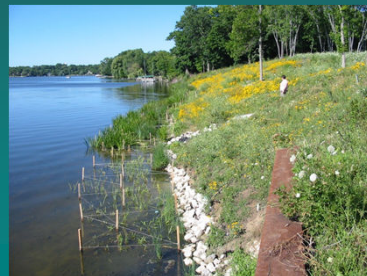
- Lakeshore stabilization
- Detention practices (sediment and nutrient)
- Aeration/destratification



Types of BMPs and activities funded in the past *cont.*

Riparian Zone (rural and urban)

- Warm season grass planting
- Tree and shrub planting
- Riparian wetland restoration



Types of BMPs and activities funded in the past *cont.*

Agricultural

- Nutrient management
- Erosion and sediment control
- Livestock waste management
- Livestock exclusion
- Buffers and filter strips



Types of BMPs and activities funded in the past *cont.*

Urban

- Rain gardens and rain barrels
- Permeable and porous pavements
- Green roofs
- Bioswales



Supplemental Guidance on Urban BMPs:

<http://www.epa.state.il.us/water/watershed/publications/nps-pollution/urban-bmps-supplemental-guidance.pdf>

Types of BMPs and activities funded in the past *cont.*

Monitoring for Environmental and/or Social Indicators



Requires a Quality Assurance Project Plan (QAPP):

<http://www.epa.gov/owow/monitoirng/volunteer/qappcover.htm>

More info on social indicators:

<http://greatlakeswater.uwex.edu/social-indicators>

Types of BMPs and activities funded in the past *cont.*

Education and Outreach Activities

- Training
- Displays
- Workshops



Requires an element that measures their effectiveness

Getting in Step: A Guide for Conducting Watershed Outreach Campaigns

<http://www.epa.gov/owow/watershed/outreach/documents>

A Note on Funding

- Only 20% of federal money allocated to Illinois EPA can be awarded to:
 - Implementation of BMPs not supported by a Watershed-based Plan
 - Watershed-based Planning
 - Information/Education
 - Monitoring and Research



Section 319 Biannual Report:

<http://www.epa.state.il.us/water/watershed/reports/biannual-319/index.html>

Application Process



319 Application

- New 319 application and request for proposals (RFP) as of spring 2010
- <http://www.epa.state.il.us/water/financial-assistance/non-point.html>
 - 319 application is web-based (writable PDF)
 - READ the RFP!
 - READ the Instructions!
- Application deadline is the same: August 1
 - must be at IEPA HQ by close of business (5 PM)



319 Application

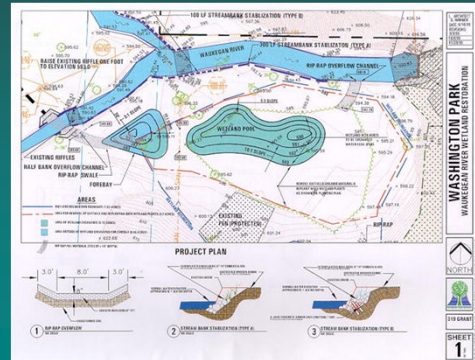
Listing and Description of BMPS

- Describe in as much detail as possible what you want to do, how you will do it, and what problems will be resolved or prevented
- Link your proposed BMPs to the causes and sources of impairment(s) identified in the Illinois Integrated Water Quality Report and Section 303(d) List
- <http://www.epa.state.il.us/water/water-quality/index.html>
 - 2010 IR – final draft (Dec. 2010) now posted
 - 2012 IR – draft released for public comment April 2012

319 Application

Listing and Description of BMPS (cont.)

- Have as much design work completed as possible
- Pictures, maps, plans



QUIZ: Link Causes and Sources of Impairments to BMPs

Cause or Source of Impairment...	BMP...
<ul style="list-style-type: none"> • Low dissolved oxygen • Cattle in the stream • Nitrogen • Urban stormwater runoff • Siltation - sedimentation 	<ul style="list-style-type: none"> • Chloride reduction education program • Large shallow wetland • Streambank stabilization • Rock riffle installation • fencing

QUIZ: Link BMP to Causes and Sources of Impairments

BMP....

- ◉ Aeration
- ◉ Milk house waste lagoon
- ◉ Rock outlet
- ◉ Dam removal
- ◉ Permeable parking lot

Cause or Source of Impairment...

- ◉ Hydrologic modification
- ◉ Urban stormwater runoff
- ◉ Excessive algae
- ◉ Low dissolved oxygen
- ◉ Fecal coliform bacteria

319 Application

Scope of Work

- Tasks, brief description, who is responsible

Schedule

- For each task, check box(es) for each quarter when activities expected to occur



Have you thought through all the steps necessary to complete your project within the 2-year grant period?

319 Application

Logic Model

Inputs → Outputs → Outcomes / Impacts

<http://www.uwex.edu/ces/pdande/evaluation/evallogicmodel.html>

319 Application

Project Cost Summary Form

- Direct Labor
 - Grant recipient staff time
- Indirect Labor
- Other Direct Costs
 - Travel
 - Equipment use, Materials, Supplies (incl. 319 project sign)
 - Subcontracts (contracts must be approved in writing by IEPA)
 - Other (can put volunteer labor value here or under subcontracts)



319 Application

Project Cost Summary Form *cont.*

- Total Costs
 - Automatically calculated
- Section 319 Assistance Amount
 - You enter the amount you are requesting
- Recipient Share (aka Match)
 - Automatically calculated
 - Percent must turn out to be 40% or more



319 Application

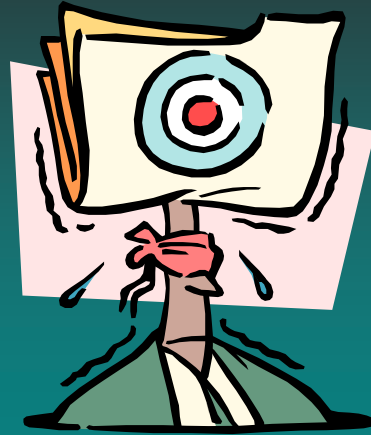
Local Match

- Organization (applicant, project partners)
- Type (cash, in-kind services)
- Amount
- Source program (e.g., IDNR Partners for Conservation, Village Community Water Fund)
- Status [applied for, not secure, secure (in-hand)]

Project Partners (list, tasks/activities)

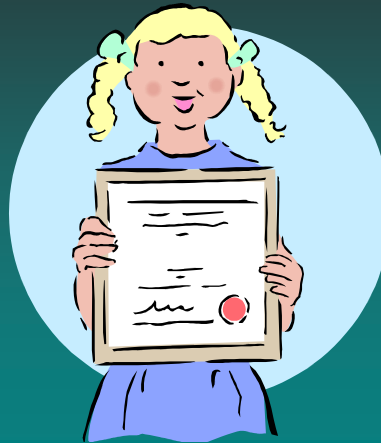
Hints...bad phrases

- would like to...
- anticipate...
- expect to...
- reduce flooding...
- fix drainage...
- improve stormwater...
- increase habitat...



Hints...good phrases

- will be used for...
- [draft] design work completed...
- over traditional measures
- resulting in...
- measured by...
- partnerships confirmed...



319 Application

Things I see that folks often don't account for under Tasks, Schedule, Project Costs:

- Grant recipient staff time: including overall grant administration, invoicing, quarterly reports, O&M plan, outreach & education, final project report
- 319 project sign (design, manufacturing, installation)
- O&M plan (in-house or subcontractor)
- Value of volunteer time
http://independentsector.org/volunteer_time



Required Application Submittals

- 2 unbound paper copies of the completed application (one with original signature on p. 16)
- 1 electronic copy of completed application (via e-mail, Illinois.gov file transfer, or on CD)
- 2 paper copies of "Organization Certifications and Grant Conditions" (one with original signatures on p. 2; can just submit pp. 1-2)
- QAPP - if applicable (1 electronic & 1 paper copy)

Optional Application Submittals

Supporting Documentation

- Project location maps
- Photos
- BMP drawings, designs

1 electronic copy of each if possible, & 1 paper copy if not too bulky/extensive (e.g., do not send copy of WBP or TMDL plan)

Notes on FFY13 Application Cycle

- Less federal funds available
- Federal Office of Management and Budget (OMB)
 - 319 audit review
 - Recommendations expected spring 2012
 - Proposed program changes possible - no idea what
- USEPA may put N & TSS back on IEPA's pollutants list (no state standards)

Notes on FFY13 Application Cycle

- Priority watersheds
 - 319/NPS watershed planning
 - 319/NPS implementation activities
 - Des Plaines River Watershed
 - Nutrient priority watershed implementation activities
 - Primarily agriculture-related impairments

IEPA's Application Timeline

- Final applications due at Illinois EPA HQ in Springfield by **August 1**
- Illinois EPA forwards recommendations to USEPA in late fall/early winter
- Illinois EPA announces grant awards following spring
- Financial Assistance Agreements executed



FREP Assistance Timeline - 2012

- **Feb 15- July 25:** Tech. assist. available from Water Resources Committee (WRC) via phone, e-mail
- **March 21, April 18, May 16, June 20:** Tech assist available from WRC members in person at these monthly FREP meetings
- **Aug 3:** electronic copy of final 319 applications due to WRC Chair
- **Aug 3 - 24:** review by WRC, comments submitted to Illinois EPA

IEPA's Evaluation Criteria

- Environmental results likely to be achieved
- Relationship to local watershed-based plan and/or TMDL plan
- Applicant's prior performance with 319 grants
- Overall effectiveness of project
- Feasibility of completing project in timely manner



IEPA's Evaluation Criteria

- Local commitment and matching funds
- Applicant's capability to administer federal grant funds
- Project evaluation component
- Education/outreach component
- QAPP (if required)



Add'l FREP Evaluation Criteria

- Project supports FREP's goals and recommendations
 - *Integrated Management Plan for the Fox River Watershed in Illinois*
<http://foxriverecosystem.org/plan.htm>
- Applicant is a FREP member
<http://foxriverecosystem.org/pdfs/FREPorg/FREP-11-12memberform.pdf>



Take Home Messages



- Start **early** (Start **NOW**)!
- **Ask** for help
- **READ** the RFP and Instructions
- Know exactly **what** you want to do; **how** you want to do it; and **reflect** that in the application
- Although IEPA needs lots of information, make application as **succinct** as possible

Help Desk



Deanna Doohaluk, FREP WRC Chair
ph: (773) 693-9200 x13
e-mail: ddoohaluk@heyassoc.com

Holly Hudson, FREP WRC
ph: (312) 386-8700
e-mail: hudson@cmap.illinois.gov

Illinois EPA – Nonpoint Source Unit
ph: (217) 782-3362
<http://www.epa.state.il.us/water/watershed/nonpoint-source.html>

FREP website: <http://www.foxriverecosystem.org>

Add'l Funding Opportunities

Illinois "Ike" Disaster Recovery Planning Program (Illinois DCEO)

- Counties, municipalities, and multijurisdictional groups of local governments
- Support planning activities that address hazard mitigation and are comprehensive in nature
- Workshop Feb. 28 in Springfield
- 2 teleconferences: Feb. 23 and March 7
- More info, Assistance with applications: CMAP's Stephen Ostrander (312-386-8696, sostrander@cmap.illinois.gov)
- Application Deadline: **4:30 p.m. on March 30, 2012** at DCEO in Springfield

Add'l Funding Opportunities

Local Technical Assistance Program (LTAP) (CMAP)

- local governments, nonprofits, and intergovernmental organizations
- address local issues at the intersection of transportation, land use, and housing, including the natural environment, economic growth, and community development
- Next call for projects – May 2012
- Proposals due – August 2012
- <http://www.cmap.illinois.gov/lta/>

