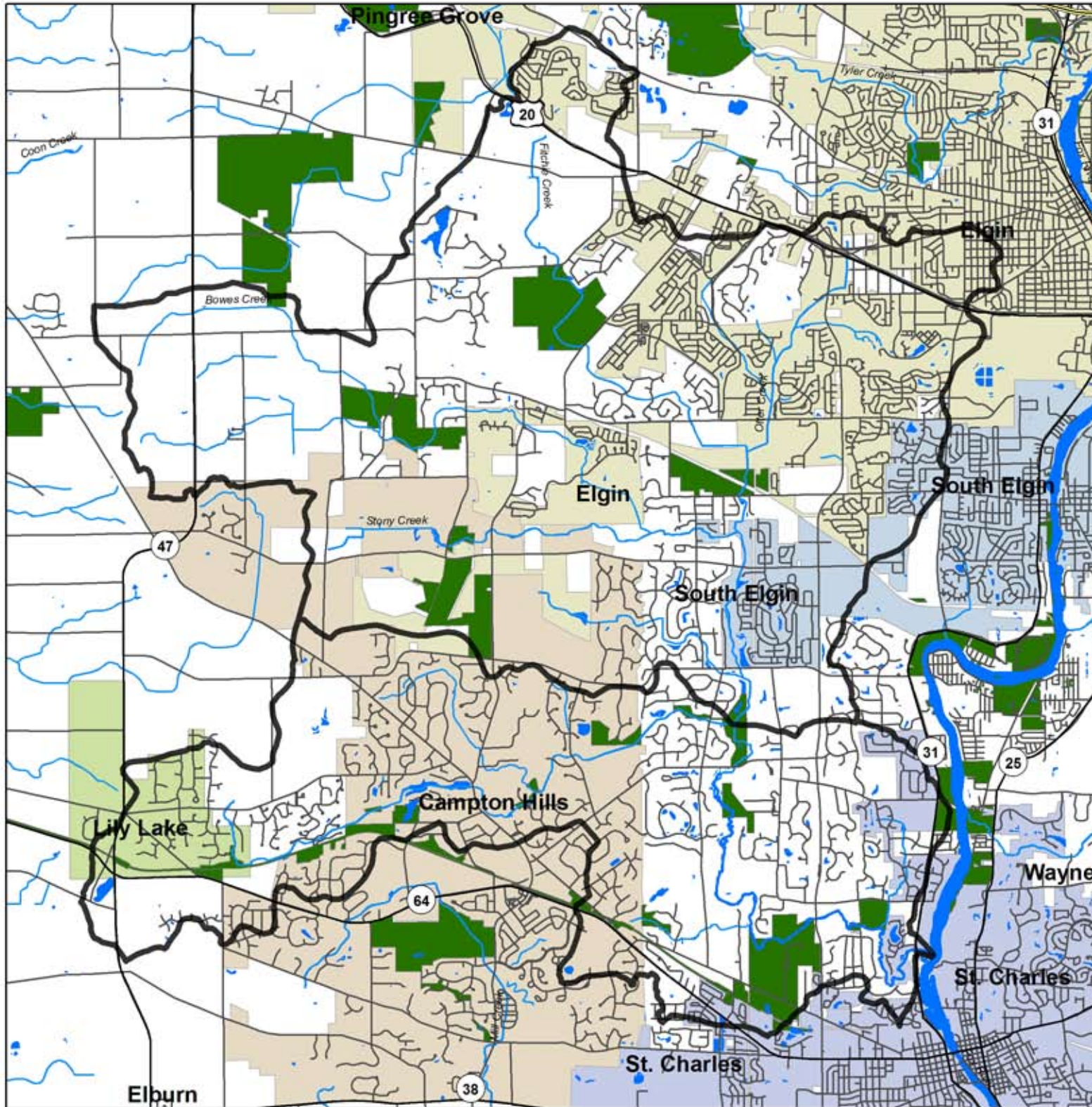



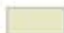







Person - Otter Creek Watershed



Watershed Planning Area

-  Otter Creek
-  Ferson Creek
-  Campton Hills
-  Elgin
-  Lily Lake
-  South Elgin
-  St. Charles
-  Kane County Forest Preserves
-  Water Bodies



Data Sources: Watershed Boundaries: Illinois State Water Survey; Municipal Boudaries: CMAP; Forest Preserve District of Kane County Sites: FPD of Kane Co.; Roads: NAVTEQ and CMAP; Metra Rail Lines: RTA; U.S. Major Highways Shapefile: ESRI; County Boundary Lines: Illinois Natural Resources Geospatial Data Clearinghouse; Water Features: National Hydrography Dataset and Kane County ADID

