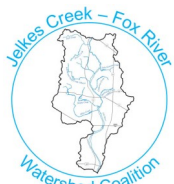


## What Can I do?

- ◆ Use pesticides and fertilizers sparingly. When use is necessary, use these chemicals in the recommended amounts. Avoid application if the forecast calls for rain; otherwise, chemicals will be washed into your local stream.
- ◆ Select native plants and grasses. Native plants require less water, fertilizer, and pesticides.
- ◆ Sweep up yard debris, rather than hosing down areas. Compost or recycle yard waste when possible.
- ◆ Don't overwater your lawn. Water during the cool times of the day, and don't let water run off into the storm drain.
- ◆ Recycle used oil and other automotive fluids at participating service stations. Do not dump chemicals down the storm drain or dispose of them in your trash.
- ◆ Use commercial car wash or wash your car on a lawn or other unpaved surface to minimize the amount of dirty, soapy water flowing into the storm drain and eventually into your local waterbody.

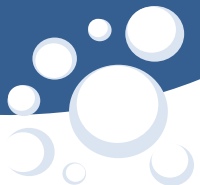


## Jelke Creek-Fox River Watershed



Funding for this project was provided in part through the United States Environmental Protection Agency under Section 319(h) of the Clean Water Act distributed through the Illinois Environmental Protection Agency.

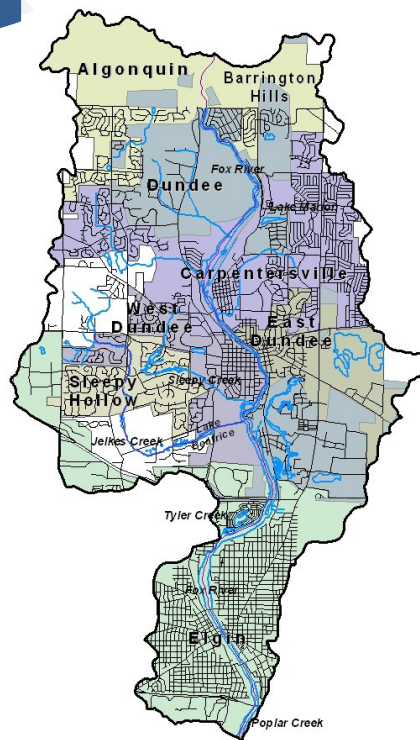
“The mission of the Jelkes Creek-Fox River Watershed Coalition is to improve surface water and groundwater quality through outreach and implementation of best management practices including but not limited to, green infrastructure and restoration of riparian corridors.”



## What is a Watershed

A watershed is the land area that drains to a single body of water. Within a watershed, water runs to the lowest point such as a stream or river. On its way, water flows over suburban lawns, streets and natural areas, through storm sewers, or seeps into the ground. The watershed community includes the natural and built environment as well as the people who work live and play within the watershed.

The Jelke Creek-Fox River Watershed is located in northern Kane, southern McHenry, and a small portion of Cook Counties and is a sub-basin of the Upper Fox River Watershed.



### Watershed Overview

Size of Watershed	40 square miles
Largest tributary	Jelke Creek
Units of Government	Algonquin, Barrington Hills, Carpentersville, East Dundee, Elgin, Kane County, Sleepy Hollow, and West Dundee
Major tributaries	Ratt Creek, Dixie Creek, Sleepy Creek, Fourwinds Way, Shaw Creek, Carpenter Creek, MacIntosh (No Name) Creek
Agricultural land use	2,187 acres
Residential land use	11,662 acres
Open space	3,474 acres
Wetland (Entire Watershed)	11%
Pre-settlement Vegetation	50% Forest
Dominant soil type	Silt loam (59)

## What is a Watershed Plan



The watershed planning process brings together residents, municipal officials and agency personnel working towards the common goal of protecting water quality. The result is the development of a watershed plan. This plan is not a legally binding document but rather a tool to make informed decisions.

The Jelke Creek-Fox River Watershed plan guides the work of the coalition and benefits the community by:

- ◆ Involving stakeholders in a cooperative partnership
- ◆ Focusing on a waterway and its tributaries
- ◆ Establishing goals and management objectives
- ◆ Identifying and assessing impairments to water resources
- ◆ Providing recommendations to help with point and nonpoint source pollution issues
- ◆ Suggesting voluntary methods to protect and enhance water quality
- ◆ Developing an action plan for restorative and preventative efforts
- ◆ Supporting applications for grant funding and technical assistance

## How to get Involved

Join the Jelke Creek-Fox River Watershed Coalition as they work to implement recommendations from the watershed plan. For more information on the plan or meeting times and locations visit :



<http://www.kanedupageswcd.org/jelkes-creek.htm>  
or contact  
jcfrcw@gmail.com