

WATERSHED PLANNING IN NORTHEASTERN ILLINOIS

WHAT IS A WATERSHED?

A watershed is an area of land that drains water into a common receiving body of water such as a stream or lake. Watershed boundaries are largely determined by the lay of the land.

WHAT IS WATERSHED PLANNING?

Watershed planning is a collaborative, community supported approach to protect and improve water quality in streams and lakes, conserve and protect groundwater resources, restore healthy aquatic life, reduce the risk of flood damage, and address other natural resources concerns. Watershed planning provides opportunities for community members to work together and develop local solutions to shared water resources challenges.

WHY DO WATERSHEDS MATTER?

Everything we do on the land in a watershed affects our streams, lakes, and groundwater. Protecting the health of our watersheds helps to protect water quality in local streams, lakes, and wetlands as well as groundwater resources needed for drinking water supplies. Maintaining healthy watersheds supports the needs of communities, businesses, wildlife, farms, and more.



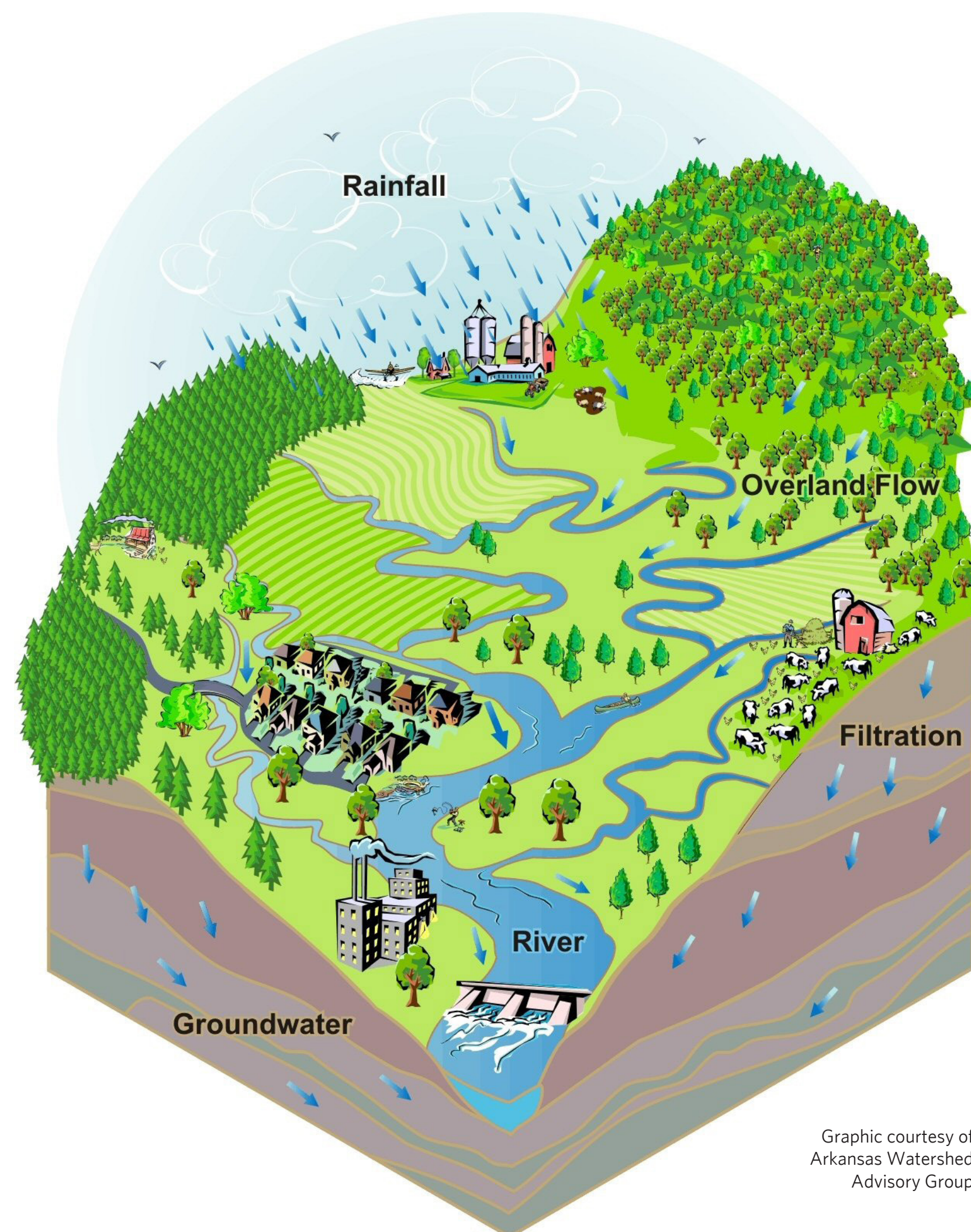
HOW CAN YOU PROTECT WATERSHEDS?

- Landscape with native plants to decrease water use, increase water infiltration, and reduce lawn maintenance.
- Minimize use of fertilizers, herbicides, and pesticides.
- Never pour toxic chemicals, paint, or pharmaceuticals down sink drains or storm sewers.
- Minimize use of salt on driveways and sidewalks.
- Minimize softener salt use by setting your system to recharge based on water use rather than on set times.
- Pick up and dispose of pet waste properly.
- Maintain septic systems.
- Buffer streambanks and shorelines with native plants.
- Help keep water where it falls. Use rain barrels to collect rainwater for home watering. Plant a rain garden.
- Take shorter showers, fix leaks, and turn off the water while brushing your teeth.
- Support water and habitat conservation practices in your community.

WHAT POLLUTES OUR WATERSHEDS?

A large source of pollution in streams and lakes comes from “nonpoint” sources. Unlike point source pollution that comes from a single source, nonpoint source pollution is caused by rainfall or snowmelt moving across the land, picking up pollutants that are then carried into lakes, streams, and wetlands.

Stormwater quickly runs across surfaces such as roofs, lawns, driveways, parking lots, and roads, and is carried into surface waters. Pollutants from stormwater runoff may include lawn or agricultural fertilizers, herbicides, insecticides, loose soils, animal or pet waste, motor oil, road salts, household hazardous chemicals, litter, and pharmaceuticals. Stormwater runoff can also worsen the erosion of streambanks and lake shorelines, and increase community flooding.



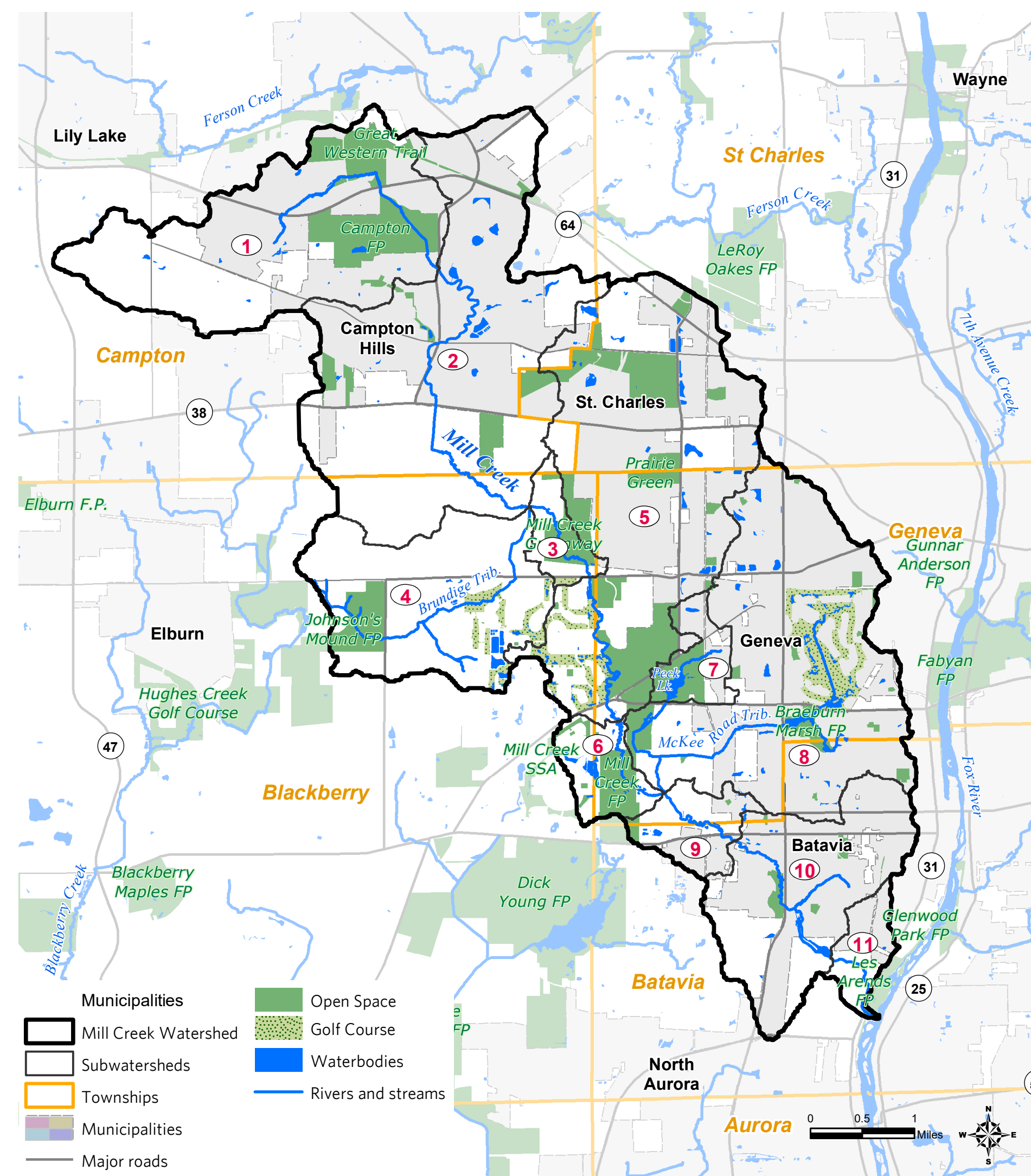
WORKING TOGETHER TO PROTECT WATER RESOURCES

INTRODUCTION

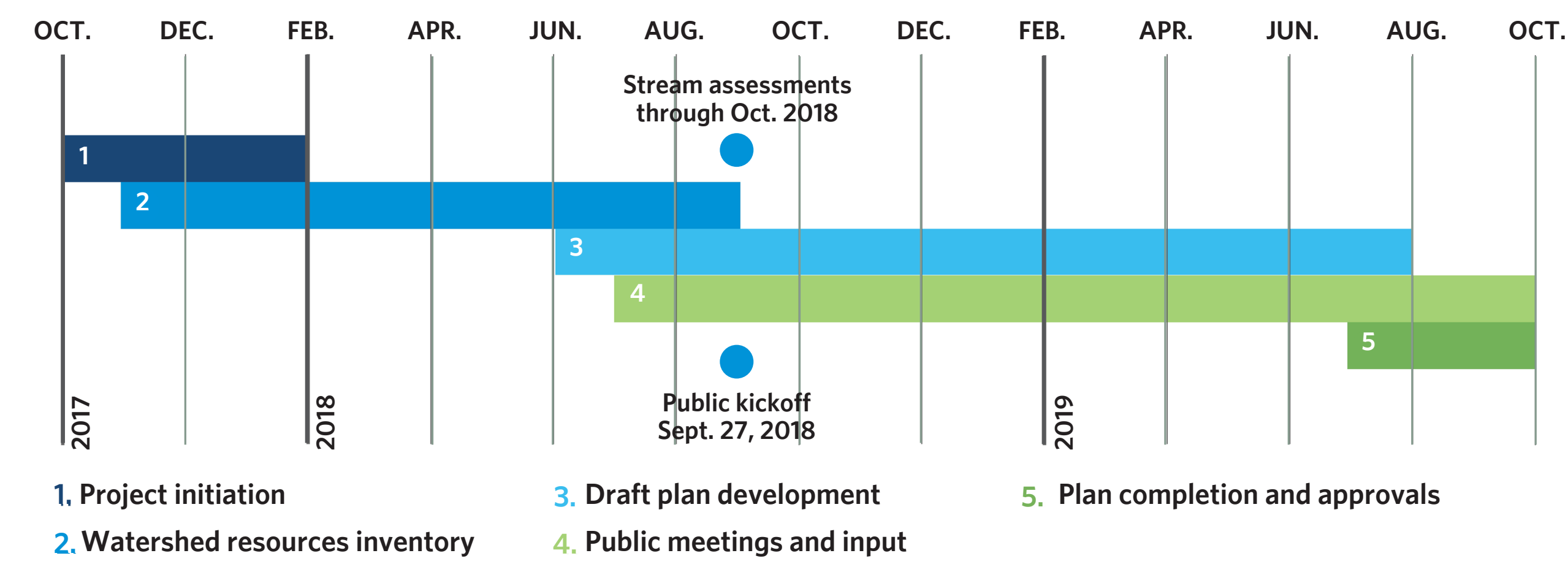
CMAP has partnered with Kane County, the Fox River Ecosystem Partnership, and Fox River Study Group to develop a watershed-based plan for the Mill Creek Watershed.

WHAT IS THE MILL CREEK PLANNING AREA?

The planning area is a 31 square mile watershed that drains to Mill Creek. It encompasses parts of four municipalities and five townships within east-central Kane County. The creek originates west of the Campton Forest Preserve, meanders in a south-southeast direction for nearly 15 miles, and junctures at the Fox River in the Les Arends Forest Preserve near Batavia.



PLANNING PROCESS



WHY DO WE NEED A PLAN?

- Mill Creek is an ecologically significant tributary of the Fox River that is considered 'impaired' under Illinois Environmental Protection Agency (IEPA) water quality standards.
- Improve and protect the water quality in Mill Creek, its tributaries, and the numerous wetlands, lakes, and ponds within this agricultural and urbanized area.
- Develop planning, policy, and on-the-ground project recommendations to restore and protect natural resources, including aquatic habitat and wildlife.
- Help obtain grants to make water quality improvements throughout the watershed.
- Set priorities and coordinate decision-making within the watershed.

WHO IS CMAP?

The Chicago Metropolitan Agency for Planning is the Areawide Water Quality Management Planning Agency for northeastern Illinois. CMAP also is the regional planning organization for northeastern Illinois, serving 7 counties, 284 municipalities, and over 1,200 units of government.

WHY ARE WE INVOLVED?

As the delegated Areawide Water Quality Management Planning Agency for the region, CMAP helps achieve the goals of northeastern Illinois' Areawide Water Quality Management Plan by working with local governments and stakeholders to conserve and restore the region's water resources. Watershed planning is one program area through which this is done.

In 2017, CMAP received a Clean Water Act Section 604(b) planning grant from the IEPA to develop a watershed plan for Mill Creek, work directly with local partners, and assist with plan implementation following the plan's completion.



PUBLIC INPUT PROCESS

Public engagement is vital to the development of the Mill Creek Watershed-based Plan to ensure that it reflects the vision of the communities, organizations, businesses, and citizens who have a stake in the outcomes.

CMAP and its partners are working to engage the public in the planning process through public workshops, interviews with community leaders and stakeholders, steering committee meetings, and on-going communication with residents, businesses, creek users, and environmental groups in the watershed.

MILL CREEK STEERING COMMITTEE
The steering committee will provide guidance on the project and review steps in the process. Members include:

Batavia Park District — Eric Lacher
Campton Township Parks and Open Space — Josh Nelson
City of Batavia, Public Works Engineering Division — Andrea Podraza
City of Batavia, Community Development Dept. — Scott Buening
City of Geneva, Public Works Engineering Div. — Brian Schiber
City of St. Charles, Public Works Engineering Division — Ken Jay
City of St. Charles, Community Dev. Division — Russell Colby
Forest Preserve District of Kane Co. — Ben Haberthur, Patrick Chess
Friends of the Fox River — Gary Swick, Gary Mechanic
Garfield Farm and Inn Museum — Jerry Johnson
Geneva Park District — Jerry Culp
Geneva Park District, Peck Farm Park — Trish Burns
Kane - DuPage Soil & Water Conservation Dist. — Ashley Curran
Kane County Dev. & Community Services Dept. — Karen Miller
Kane County Division of Environmental & Water Resources — Rob Linke, Jessica Mino
Kane County Farm Bureau — Steve Arnold, Marty Keltner
Mill Creek Special Service Area (SSA) — Bill Earle
Mill Creek Special SSA Board — Barry Stuedemann, Clare Fitzgerald, Mark Neville
St. Charles Park District — Chris Gingrich, Ryan Solomon
The Conservation Foundation — Dan Lobbes, Trish Beckjord
Village of Campton Hills — Ron Searl
Wasco Sanitary District — Thomas Bihun



STEERING COMMITTEE MEETINGS

PUBLIC KICKOFF
Tonight's public kickoff is designed to:

- Introduce you to the planning process,
- Get input on your priorities, and
- Learn about challenges or opportunities you would like the plan to address.

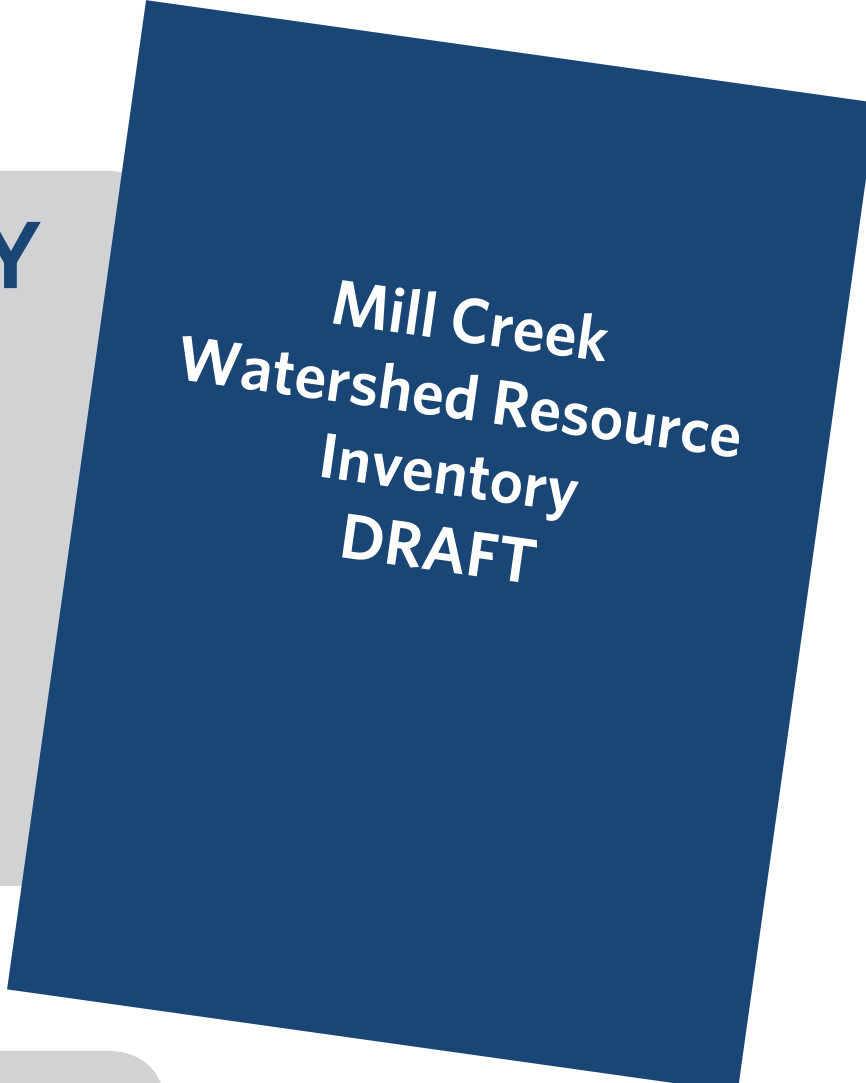
STAKEHOLDER INTERVIEWS

ONLINE SURVEY COMING SOON!

WHAT WE'VE DONE SO FAR...

DRAFT WATERSHED RESOURCE INVENTORY
The draft of the watershed resource inventory was submitted to the Illinois EPA in July 2018.

Take a look through a hard copy today! You can also visit our website to download or view online:
<http://www.cmap.illinois.gov/programs/lta/mill-creek>



FIELD DATA COLLECTION
CMAP staff has been conducting an assessment of the streams within the Mill Creek watershed. The information collected will be incorporated into a watershed management plan for the Mill Creek watershed.

