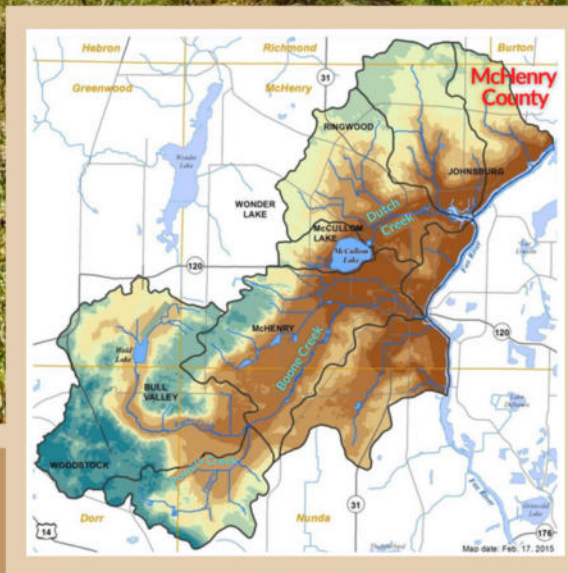
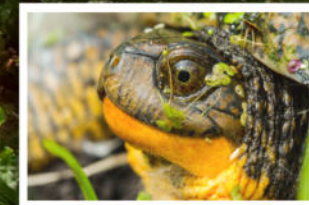


Partnerships

- Chicago Metropolitan Agency for Planning
- City and Township of McHenry
- Conversación de Conservación
- Environmental Defenders of McHenry Co.
- Friends of Hackmatack National Wildlife Refuge
- IL Department of Natural Resources
- IL Nature Preserves Commission
- IL Natural Resources Conservation Service
- McHenry County Conservation District
- McHenry County Soil and Water Conservation District
- Midwest Native Bee Alliance
- Openlands
- Small Waters Education
- The Land Conservancy of McHenry County
- Villages of Bull Valley, Johnsburg and McCullom Lake
- Wildflower Preservation and Propagation Committee

Boone-Dutch Creeks Watershed Alliance



Our Mission

Our mission is to protect the integrity and biodiversity of the Boone-Dutch Creeks Watershed ecosystem through public and private partnerships that promote conservation, restoration, education and wise land-use planning.



Contact us

501(c)3 Not-For-Profit Organization

Boone-Dutch Creeks Watershed Alliance

114 S Jefferson Street
Woodstock, IL 60098

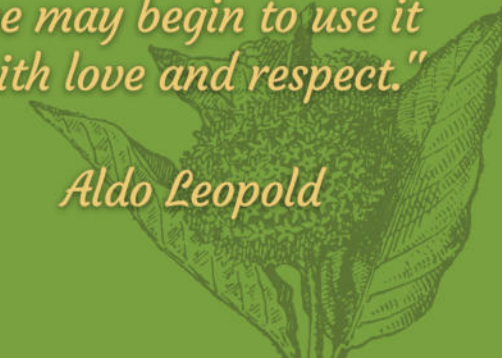
BooneDutch@gmail.com

Phone: 815-687-0350



*"When we see land
as a community
to which we belong,
we may begin to use it
with love and respect."*

Aldo Leopold



About the Alliance

Combined, the Boone and Dutch Creek watersheds and adjoining smaller tributaries to the Fox River encompass 29,005 acres within the municipalities of Bull Valley, McHenry, Johnsburg, Ringwood, Wonder Lake, Woodstock and unincorporated McHenry, Nunda, Greenwood, Dorr and Richmond Twps.

These watersheds are home to graminoid fens, sedge meadows, wet prairies, remnant oak savannas and the largest complex of intact woodlands in McHenry County. Rare, cold-water seeps and streams host unique fish populations. Together, the uplands and wetlands are home to diverse native plant communities and the wildlife that depend on them.

The watersheds currently contain seven dedicated Illinois Nature Preserves, McHenry County Conservation District, Land Conservancy of McHenry County, municipal park sites open to the public, and many conservation easements on private lands. Hundreds of acres are protected in perpetuity, and the BDCWA is working in partnership with landowners and municipalities to expand this preservation.

For more information & how you can help please visit <https://foxriverecosystem.org/fox/boone-dutch-creek>



Projects, Past & Present

- Boone-Dutch Creeks Watershed-Based Plan Implementation
- Community Outreach, Education and Advocacy
- Protection through Land Acquisition and Conservation Easements
- Habitat Restoration with Public Entities and Private Landowners
- Public Policy Development
- Seed Collection & Native Plantings

Please Support Us

with your tax-deductible donation. Your support will help us continue the mission of protecting our watersheds.

Contributor Information:

Name _____

Address _____

City / State / Zip _____

Email _____

Phone _____

Contribution level:

- \$50 \$100 \$500
 \$1,000 Other _____

Send check payment to:

BDCWA
114 S Jefferson Street
Woodstock, IL 60098

*Join the Alliance
in realizing the vision
to preserve this ecologically
significant land.*