

VILLAGE OF CARPENTERSVILLE KEITH ANDRES MEMORIAL PARK STREAM RESTORATION PROJECT

PREPARED BY

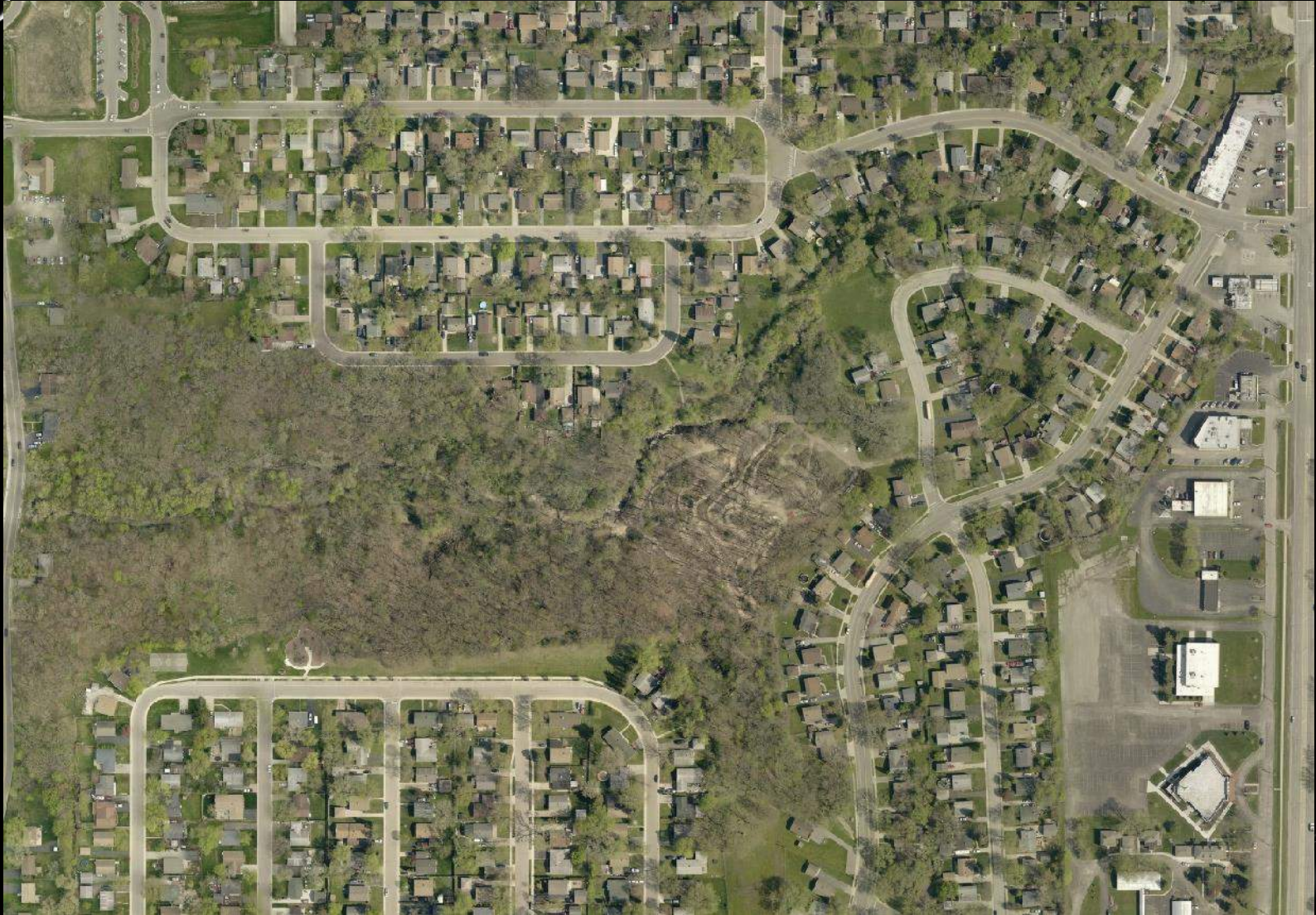
JEDD ANDERSON, PWS, CPESC, CWS

VICE PRESIDENT

CHRISTOPHER B. BURKE ENGINEERING, LTD.



KEITH ANDRES MEMORIAL PARK



CHICAGO AREA MOUNTAIN BIKERS (CAMBr) TRAILS



BENEFITS OF STREAM RESTORATION

- **DETRIMENT** - EXCESSIVE DOWNSTREAM SEDIMENTATION CHOKES STREAMS, REDUCES HABITAT VALUE, DAMAGES FLORA AND FAUNA, REDUCES UPLAND VALUE, PLACES INFRASTRUCTURE AT RISK
- **BENEFIT** - SIGNIFICANT REDUCTION IN EROSION AND DOWNSTREAM SEDIMENTATION
 - **UPLAND IS AN ASSET**
 - IMPROVED RECREATIONAL OPPORTUNITIES
 - DECREASED EROSION AND DOWNSTREAM SEDIMENTATION
 - IMPROVED WILDLIFE HABITAT
 - ENHANCED WOODLAND AND RIPARIAN (STREAM CORRIDOR) HABITAT

CURRENT PROJECT

- TOPOGRAPHIC SURVEY OF RAVINE BOTTOM AND SIDE CHANNEL
- PREPARATION OF PRELIMINARY ENGINEERING PLANS TO SUPPORT GRANT APPLICATION – AUGUST 1, 2017
- COORDINATION WITH GRANT MEMBERS TO INCORPORATE THIS PROJECT INTO THE OVERALL FOX RIVER WATERSHED PLAN, WHICH WILL ALLOW PROJECT TO BE ELIGIBLE FOR RECEIPT OF IEPA SECTION 319 GRANT FUNDING TO HELP OFFSET PROJECT COST

REPRESENTATIVE PHOTOS





Photo 9: West of Sacramento Drive, east end of the concrete channel



Photo 10: Concrete channel, further downstream



Photo 11: Broken concrete channel, further downstream



Photo 12: Broken concrete channel

REPRESENTATIVE PHOTOS





Photo 13: Near the western end of the concrete channel, looking west



Photo 14: Western end of concrete channel looking east



Photo 15: Western end of concrete channel, looking east



Photo 16: Western end of concrete channel, looking west, similar to Photo 13

REPRESENTATIVE PHOTOS



REPRESENTATIVE PHOTOS





Photo 17: Side channel culvert repair with exposed filter fabric



Photo 18: Side channel within Andres Park



Photo 19: Side channel rip rap bank stabilization



Photo 20: Side channel rip rap bank stabilization, looking NE



Photo 25: Typical view of channel looking west in Andres Park



Photo 26: Representative of channel morphology



Photo 27: Typical view of channel looking west in Andres Park



Photo 28: Representative of channel morphology

REPRESENTATIVE PHOTOS



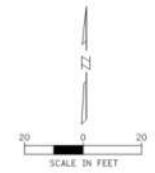
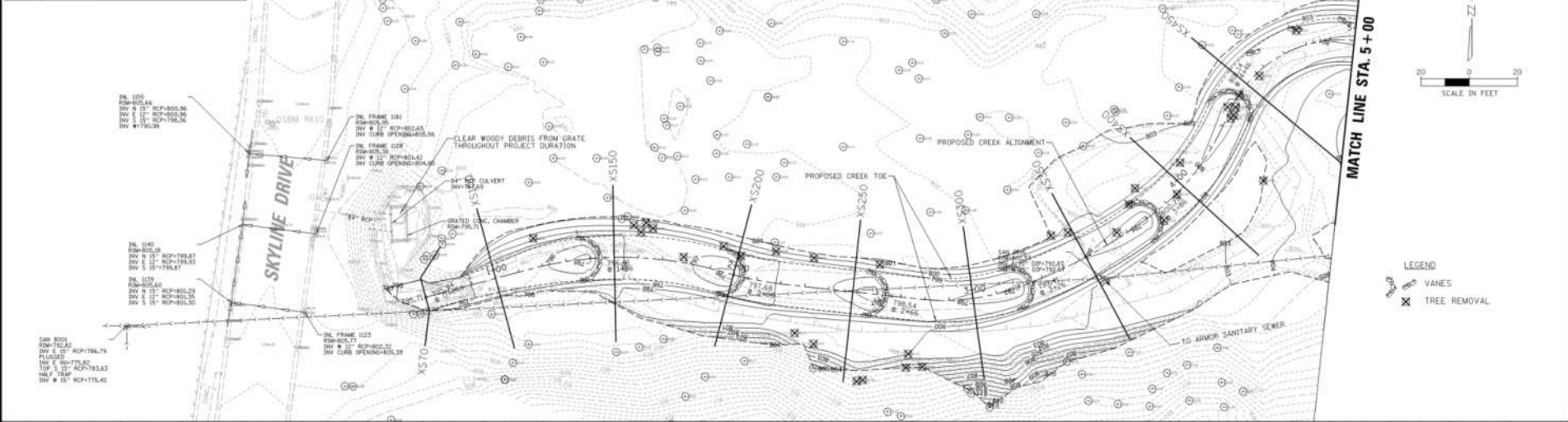
REPRESENTATIVE PHOTOS



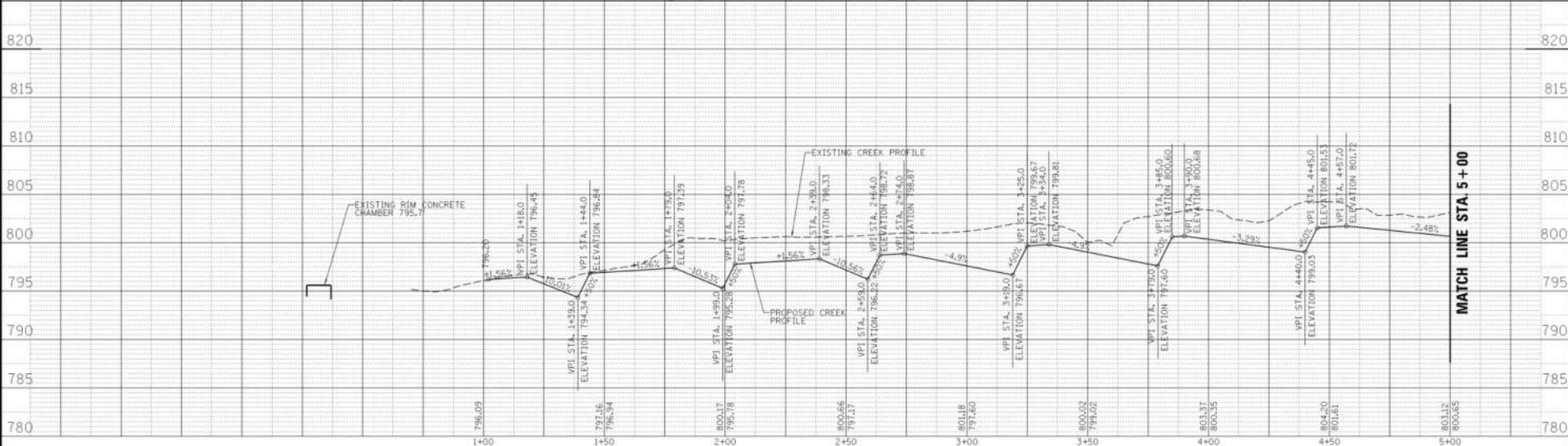
REPRESENTATIVE PHOTOS



ELEVATION BENCHMARKS	
DATUM: NAVD 88 CDMA GPS OBSERVED	
NO.	DESCRIPTION
1001	CELEV
1002	LOCATED ON WEST EDGE OF TEL. MH. BUN. 2001. 806.04
1003	NORTH OF CREEK IN SOUTH BOUND LANE OF SKYLINE DR.



LEGEND
 ○ VANE
 X TREE REMOVAL



CHRISTOPHER B. BURKE ENGINEERING, LTD.
 9575 W. Higgins Road, Suite 600
 Rosemont, Illinois 60018
 (847) 823-0500

CLIENT:

 Carpentersville
 ILLINOIS
Building a Better Tomorrow Today

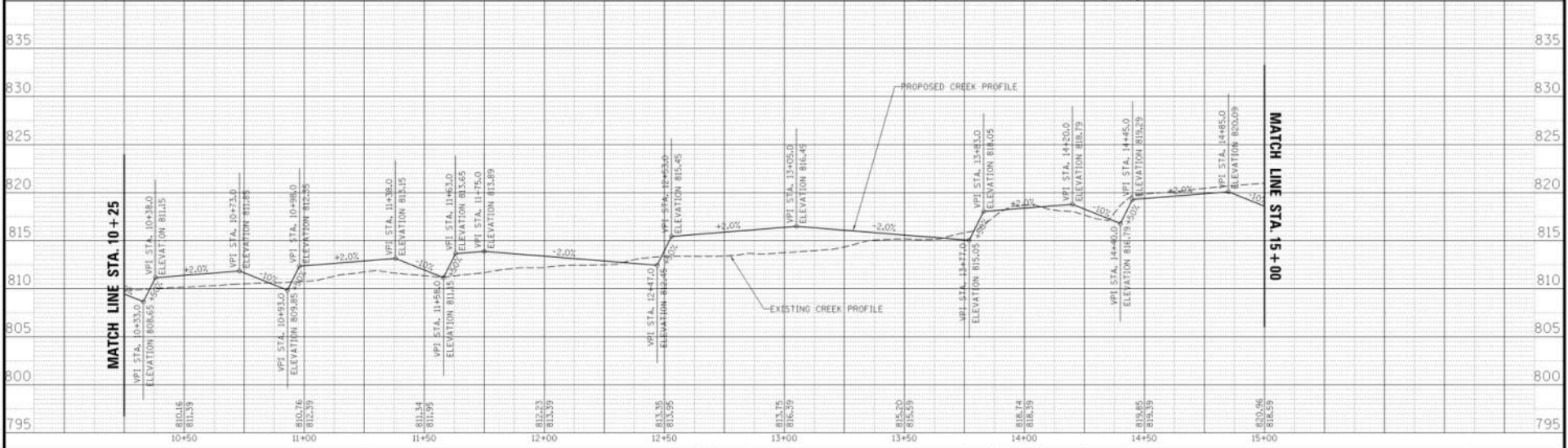
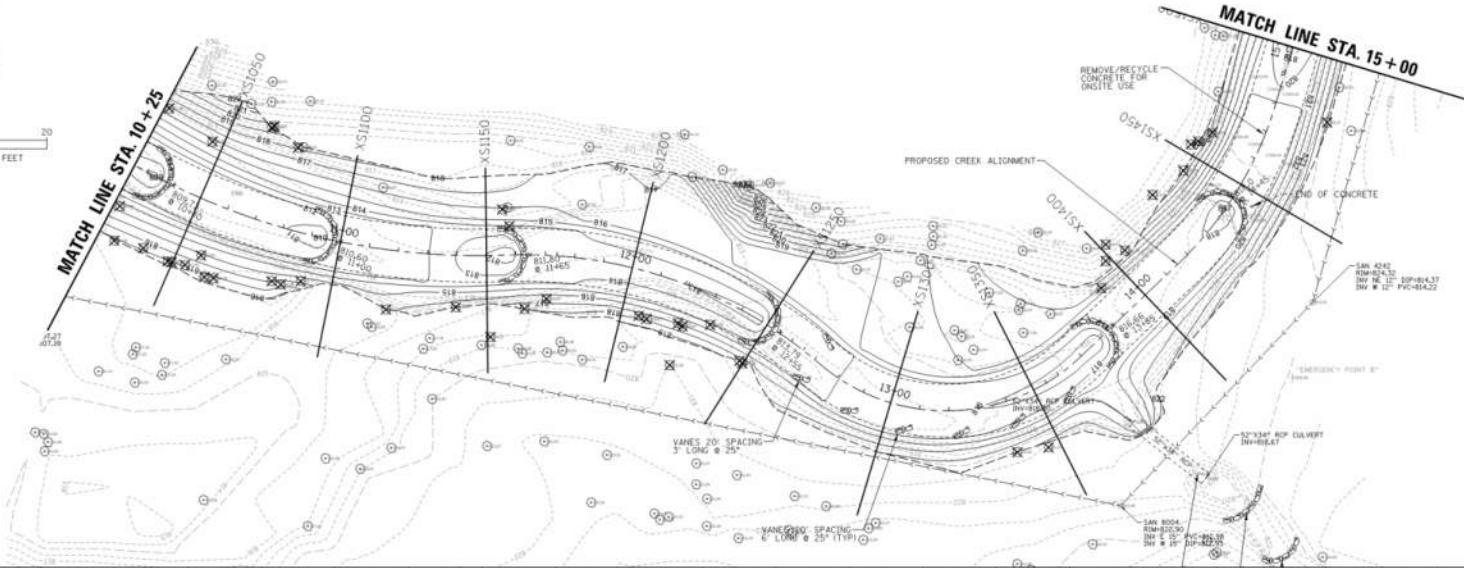
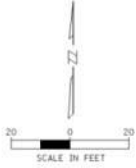
NO.	DATE	NATURE OF REVISION	CHD.	MODEL

DESIGN	JR
DRAWN	EAT
CHD.	
SCALE	20'
PLOT DATE	3/28/2019
CAD USER	smo1002
	Default

TITLE: PLAN AND PROFILE

PLAN AND PROFILE

PROJ. NO.
 DATE: 3/28/2019
 SHEET 5 OF 26
 DRAWING NO.
PP1



CHRISTOPHER B. BURKE ENGINEERING, LTD.
 9575 W. Higgins Road, Suite 600
 Rosemont, Illinois 60018
 (847) 823-0500

CLIENT:

 City of CARPENTERSVILLE
 ILLINOIS
Building a Better Tomorrow Today

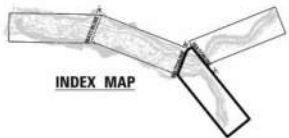
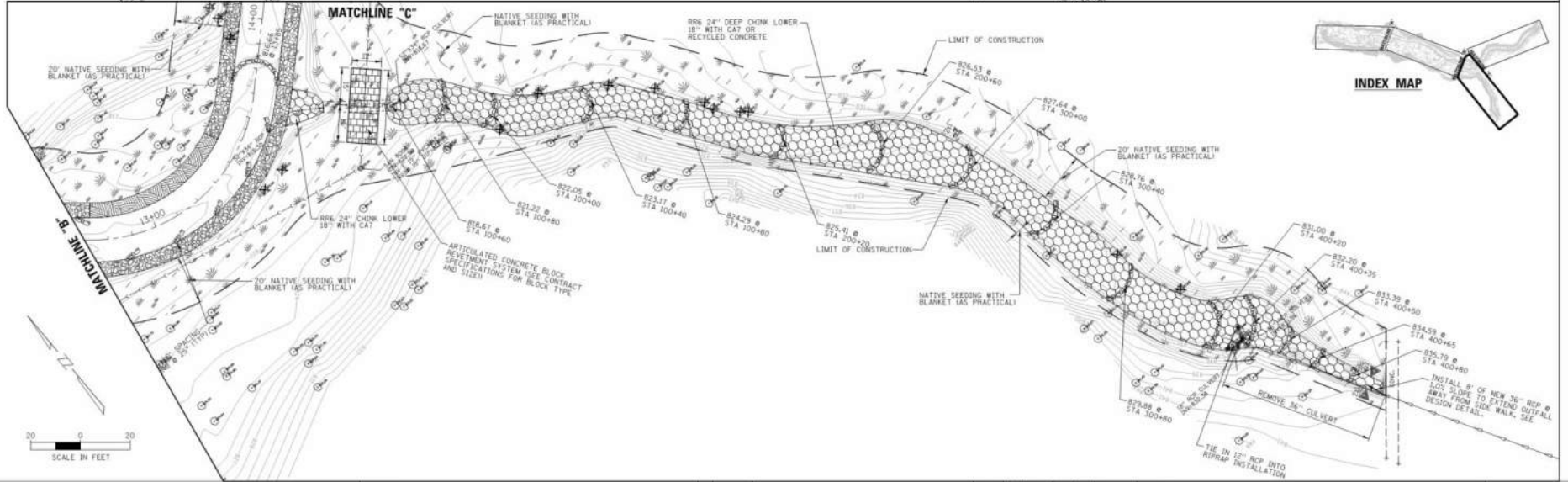
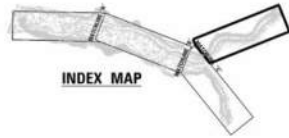
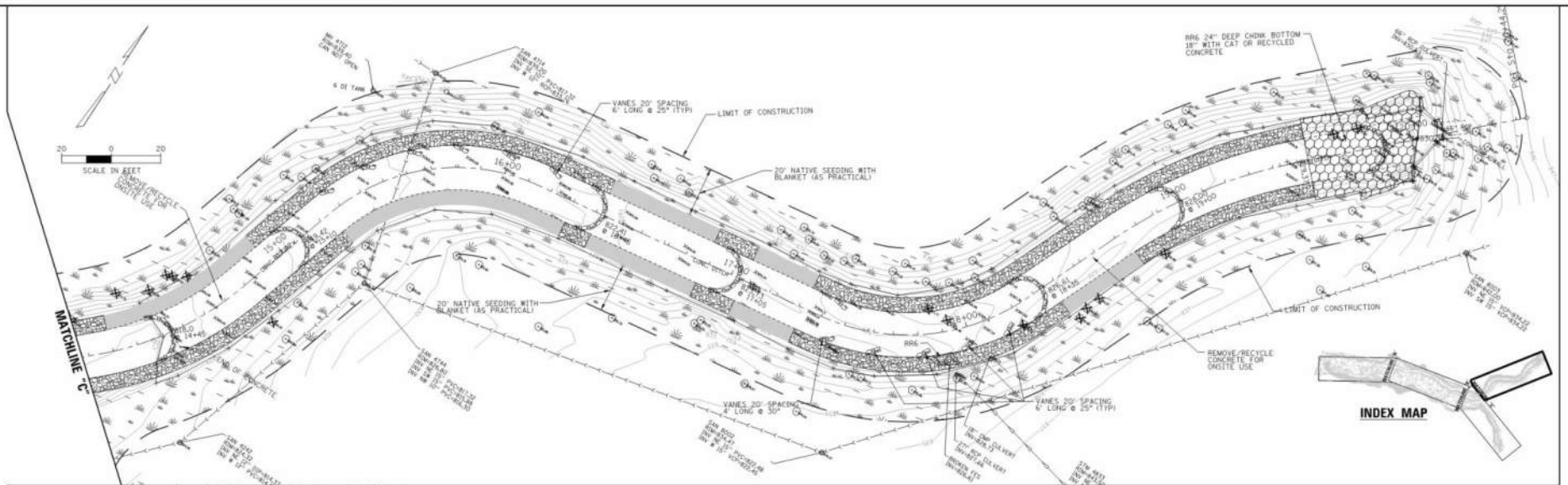
NO.	DATE	NATURE OF REVISION	CHKD.	MODEL	JA	EAT	TITLE

DESIGN: EAT
 DRAWN: EAT
 SCALE: 20'
 PLOT DATE: 3/28/2019
 CAD USER: atmotoda
 Default

FILE NAME: H:\Carpentersville\60285-00002-Env\Plan Set\607-60285 Plan and Profile.dgn

PLAN AND PROFILE

PROJ. NO.
 DATE: 3/28/2019
 SHEET 1 OF 24
 DRAWING NO.
PP3



CHRISTOPHER B. BURKE ENGINEERING, LTD.
 9575 W. Higgins Road, Suite 600
 Rosemont, Illinois 60018
 (847) 823-0500

CLIENT:


DESIGN	JA	
CHECK	JAT	
CHD.	JA	
SCALE:	20'	
PLOT DATE:	3/28/2019	
LEAD USER:	mmh@cbbe.com	
MODEL:	Default	

TITLE:
LANDSCAPING PLAN
 PROJ. NO. 160285
 DATE: 3/28/2019
 SHEET 15 OF 26
 DRAWING NO.
LAN-2

PINE DUNES



PINE DUNES



STONEROLLER



STONEROLLER



STONEROLLER



PROJECT COLLABORATION

- ILLINOIS ENVIRONMENTAL PROTECTION AGENCY
 - SECTION 319 GRANT
 - APPLICATION DUE – CLOSE OF BUSINESS AUGUST 1, 2017
 - JELKES CREEK – FOX RIVER WATERSHED ACTION PLAN INCLUDES KEITH ANDRES PARK
 - APPROVED PLAN
 - WHY IS THIS IMPORTANT?
 - WATERSHED PLAN PARTNERS
 - CHICAGO METROPOLITAN AGENCY FOR PLANNING (CMAP)
 - THE CONSERVATION FOUNDATION
- LAKE MARIAN RIVER CONSERVANCY DISTRICT
- CHICAGO AREA MOUNTAIN BIKERS (CAMBr)
- US ARMY CORPS OF ENGINEERS
- KANE-DUPAGE SOIL AND WATER CONSERVATION DISTRICT (KDSWCD)